

---

**TECHNICAL MANUAL**

**ORGANIZATIONAL, DIRECT SUPPORT, AND GENERAL SUPPORT MAINTENANCE  
REPAIR PARTS AND SPECIAL TOOLS LIST  
(INCLUDING DEPOT MAINTENANCE REPAIR PARTS AND SPECIAL TOOLS)  
FOR**

**TEST FACILITIES SET, TRANSPONDER TEST SETS**

**AN/APM-270(V)1 (NSN 6625-00-888-4589)**

**AN/APM-270(V)2 (NSN 6625-00-888-4602)**

**AN/APM-270(V)3 (NSN 6625-00-888-4609)**

---

**HEADQUARTERS, DEPARTMENT OF THE ARMY  
SEPTEMBER 1976**

TECHNICAL MANUAL

NO. 11-6625-1644-24P

HEADQUARTERS,  
DEPARTMENT OF THE ARMY  
WASHINGTON, DC, 30 September 1976

**ORGANIZATIONAL, DIRECT SUPPORT, AND GENERAL SUPPORT MAINTENANCE  
REPAIR PARTS AND SPECIAL TOOLS LIST  
(INCLUDING DEPOT MAINTENANCE REPAIR PARTS AND SPECIAL TOOLS)  
FOR**

**TEST FACILITIES SET, TRANSPONDER TEST SETS  
AN/APM-270(V)1 (NSN 6625-00-888-4589)  
AN/APM-270(V)2 (NSN 6625-00-888-4602)  
AN/APM-270(V)3 (NSN 6625-00-888-4609)**

Current as of 15 July 1976

**REPORTING OF ERRORS**

You can improve this manual by recommending improvements using DA Form 2028-2 (Test) located in the back of the manual. Simply tear out the self addressed form, fill it out as shown on the sample, fold it where shown, and drop it in the mail.

If there are no blank DA Form 2028-2 (Test) in the back of your manual, use the standard DA Form 2028 (Recommended Changes to Publications and Blank Forms) and forward to the Commander, US Army Electronics Command, ATTN: DRSEL-MA-Q, Fort Monmouth, New Jersey 07703.

In either case a reply will be furnished direct to you.

Table of Contents

	Page	Illus Figure
SECTION I. Introduction .....	1	
II. Repair parts list .....	5	
Group 00 Test Facilities Set, Transponder Test Set AN/APM-270(V) 1, 2 or 3 .....	5	1
01 Cover Assembly CW-1010/APM-270(V) .....	7	2
02 Test Facilities Set TS-2735/APM-270(V) .....	9	3
0201 Car assembly .....	11	4
0202 Chassis assembly .....	13	5
0203 Printed wiring assembly (A3) .....	17	6
0204 Printed wiring assembly (A4) .....	21	7
0205 Printed wiring assembly (A5) .....	25	8
0206 Printed wiring assembly (A6) .....	29	9
0207 Printed wiring assembly (A7) .....	33	10
0208 Printed wiring assembly (A8) .....	37	11
0209 Printed wiring assembly (A9) .....	41	12
0210 Control panel assembly .....	43	13
0211 Cable assembly (W1) .....	47	14
03 Cable Assembly, Electrical Power CX-11719/APM, CX-11629/APM-123, CX-11626/123(V) or CX-11628/APM-123 .....	49	15-18
04 Cable Assembly CG-3504/U .....	57	19
05 Cable Assembly CX-11722/APM-270(V) .....	59	20
06 Cable Assembly CG-409H/U .....	61	21
SECTION III. Special tools (Not applicable) .....		
IV. National stock number and part number index .....	62	

\*This manual supersedes TM 11-6625-1644-25P, April 1969.

SECTION I

INTRODUCTION

1. Scope

This manual lists repair parts and special tools required for performance of organizational, direct support, and general support maintenance of the AN/APM-270(V)1, AN/APM-270(V)2, and AN/APM-270(V)3.

2. General

This Repair Parts and Special Tools List is divided into the following sections:

a. *Section II. Repair Parts List.* A list of repair parts authorized for use in the performance of maintenance. The list also includes parts which must be removed for replacement of the authorized parts. Parts lists are composed of functional groups in ascending numerical sequence, with the parts in each group listed in figure and item number sequence.

b. *Section III. Special Tools List.* Not applicable.

c. *Section IV. National Stock Number and Part Number Index.* A list, in ascending National Item identification number (NIIN, last 9 digits) sequence, of all National stock numbers appearing in the listings, followed by a list, in alphameric sequence, of all part numbers appearing in the listings. National stock number and part numbers are cross-referenced to each illustration figure and item number appearance.

3. Explanation of Columns

The following provides an explanation of columns found in the tabular listings:

a. *Illustration.* This column is divided as follows:

(1) *Figure number.* Indicates the figure number of the illustration in which the item is shown.

(2) *Item number.* The number used to identify each item called out in the illustration.

b. *Source, Maintenance, and Recoverability Codes (SMR).*

(1) *Source code.* Source codes are assigned to support items to indicate the manner of acquiring support items for maintenance, repair, or overhaul of end items. Source codes are entered in the first and second positions of the Uniform SMR Code format as follows:

<i>Code</i>	<i>Definition</i>
PA	Item procured and stocked for anticipated or known usage.
XA	Item is not procured or stocked because the requirements for the item will result in the replacement of the next higher assembly.
XD	A support item that is not stocked. When required, item will be procured through normal supply channels.

NOTE

Cannibalization or salvage may be used as a source of supply for any items source coded above except those coded XA, XD, and aircraft support items as restricted by AR 700-42.

(2) *Maintenance code.* Maintenance codes are assigned to indicate the levels of maintenance authorized to USE and REPAIR support items. The maintenance codes are entered in the third and fourth positions of the Uniform SMR Code format as follows:

(a) The maintenance code entered in the third position will indicate the lowest maintenance level authorized to remove, replace, and use the support item. The maintenance code entered in the third position will indicate one of the following levels of maintenance:

<i>Code</i>	<i>Application/Explanation</i>
O-	Support item is removed, replaced, used at the organizational level.
H-	Support item is removed, replaced, used at the general support level.

(b) The maintenance code entered in the fourth position indicates whether the item is to be repaired and identifies the lowest maintenance level with the capability to perform complete repair (i.e., all authorized maintenance functions). This position will contain one of the following maintenance codes:

<i>code</i>	<i>Application/Explanation</i>
H-	The lowest maintenance level capable of complete repair of the support item is the general support level.
Z-	Nonreparable. No repair is authorized.

(3) *Recoverability code.* Recoverability codes are assigned to support items to indicate the disposition action on unserviceable items. The recoverability code is entered in the fifth position of the Uniform SMR Code format as follows:

<i>Recoverability codes</i>	<i>Definition</i>
Z-	Nonreparable item. When unserviceable, condemn and dispose at the level indicated in position 3.
H-	Reparable item. When uneconomically repairable, condemn and dispose at the general support level.

c. *National Stock Number.* Indicates the National stock number assigned to the item and will be used for requisitioning purposes.

d. *Part Number.* Indicates the primary number used by the manufacturer (individual, company, firm,

corporation, or Government activity), which controls the design and characteristics of the item by means of its engineering drawings, specifications standards, and inspection requirements, to identify an item or range of items.

**NOTE**

When a stock numbered item is requisitioned, the repair part received may have a different part number than the part being replaced.

*e. Federal Supply Code for Manufacturer (FSCM).* The FSCM is a 5-digit numeric code listed in SB 708-42 which is used to identify the manufacturer, distributor, or Government agency, etc.

*f. Description.* Indicates the Federal item name and, if required, a minimum description to identify the item.

*g. Unit of Measure (U/M).* Indicates the standard of the basic quantity of the listed item as used in performing the actual maintenance function. This measure is expressed by a two-character alphabetical abbreviation (e.g., ea. in, pr, etc.). When the unit of measure differs from the unit of issue, the lowest unit of issue that will satisfy the required units of measure will be requisitioned.

*h. Quantity Incorporated in hit.* Indicates the quantity of the item used in the breakout shown on the illustration figure, which is prepared for a functional group, subfunctional group, or an assembly.

**4. Special Information**

**The following publications pertain to the AN/APM-270(V) and its components:**

TM 11-6625-1644-12, Test Facilities Set, Transpon-

der Test Set AN/APM-270(V)

TM 11-6625-1644-45, Test Facilities, Transponder Test Set AN/APM-270(V)

**5. How to Locate Repair Parts**

*a. When National stock number or part number is unknown*

(1) *First.* Using the table of contents, determine the functional group within which the repair part belongs. This is necessary since illustrations are prepared for functional groups and listings are divided into the same groups.

(2) *Second.* Find the illustration covering the functional group to which the repair part belongs.

(3) *Third.* Identify the repair part on the illustration and note the illustration figure and item number of the repair part.

(4) *Fourth.* Using the Repair Parts Listing, find the figure and item number noted on the illustration.

*b. When National stock number or part number is known.*

(1) *First.* Using the Index of National Stock Numbers and Part Numbers, find the pertinent National stock number or part number. This index is in ascending NIN sequence followed by a list of part numbers in ascending alphanumeric sequence, cross-referenced to the illustration figure number and item number.

(2) *Second.* After finding the figure and item number, locate the figure and item number in the repair parts list.

**6. Abbreviations**

Not applicable.

(Next printed page is 4)

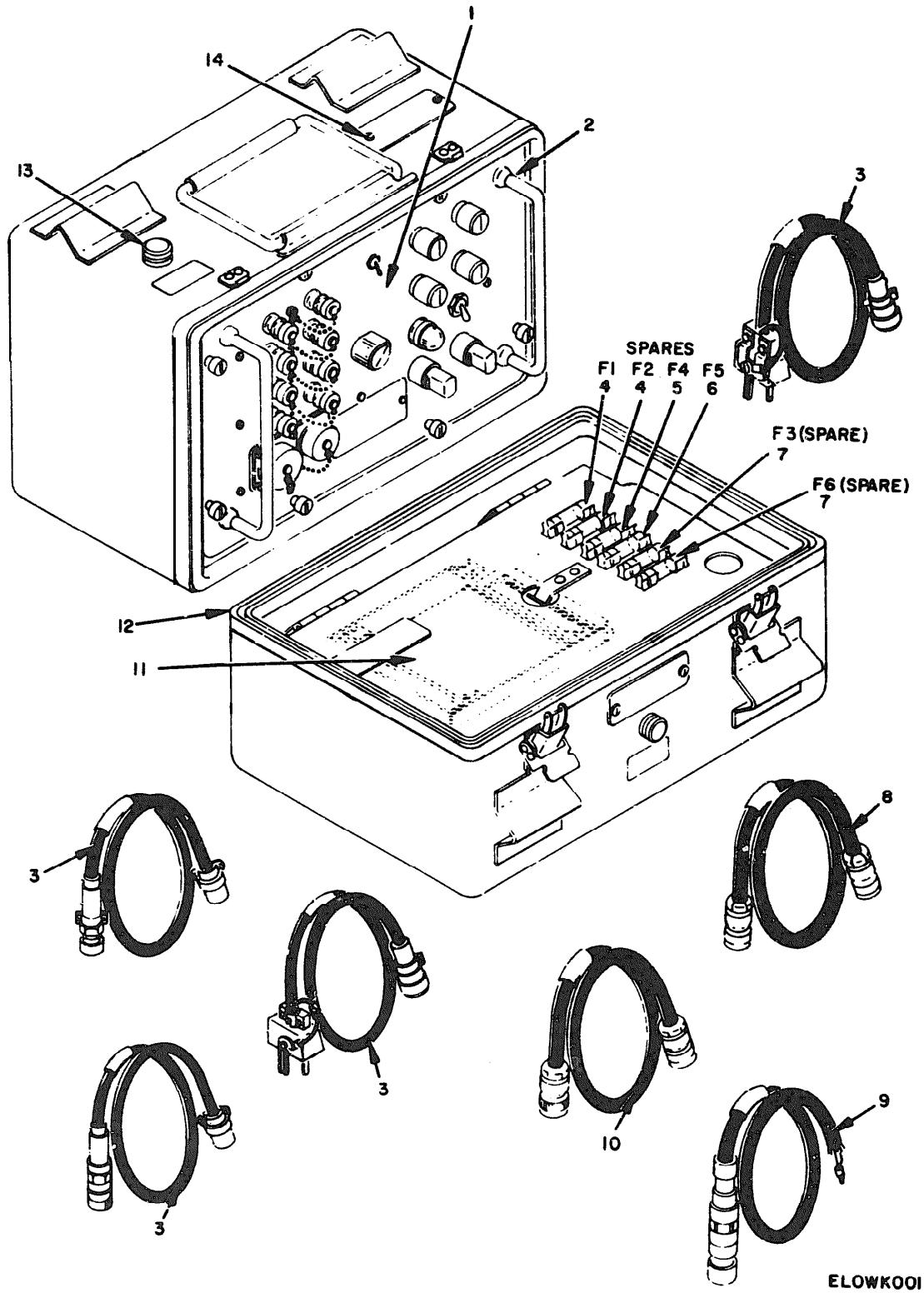


Figure 1. Test Facilities Set, Transponder Test Set AN/APM-270(V) 1, 2, or 3.

## SECTION II

TM 11-6625-1644-24P

(1) ILLUSTRATION		(2)	(3)	(4)	(5)	(6) DESCRIPTION	(7)	(8)
(a) FIG NO.	(b) ITEM NO.	SMR CODE	NATIONAL STOCK NUMBER	PART NUMBER	FSCM	U/SABLE ON CODE	U/M	QTY INC IN UNIT
GROUP 00 TEST FACILITIES SET, TRANSPONDER TEST SET AN/APM-270(V) 1, 2, OR 3								
1	1	XDORH		TS2735APM270V	80058	TEST FACILITIES SET	EA	1
1	2	XDMWH		SMD656640	80063	CHASSIS AND PANEL	EA	1
1	3	PAOHM	6150-00-926-6369	CX11719APM	80058	CABLE ASSEMBLY, POWER OR	EA	1
1	3	XDOEH		CX11629APM123	80058	CABLE ASSEMBLY, POWER OR	EA	1
1	3	PAOHM	6150-00-926-6368	CX11626APM123V	80058	CABLE ASSEMBLY, POWER OR	EA	1
1	3	XDOEH		CX11628APM123	80058	CABLE ASSEMBLY, POWER	EA	1
1	4	PAOZZ	5920-00-281-0224	FO2A250V1-2AS	81349	FUSE, CARTRIDGE	EA	2
1	5	PAOZZ	5920-00-530-2825	FO2A250V3-8AS	81349	FUSE, CARTRIDGE	EA	1
1	6	PAOZZ	5920-00-280-5031	FO2A250V1-4AS	81349	FUSE, CARTRIDGE	EA	1
1	7	PAOZZ	5920-00-284-9492	FO2A250V1-16AS	81349	FUSE, CARTRIDGE	EA	2
1	8	XDOEH		CG3504U	80058	CABLE ASSEMBLY, RADIO FREQUENCY	EA	1
1	9	PAOHM	5995-00-935-8758	CX11722APM270V	80058	CABLE ASSEMBLY	EA	1
1	10	PAOHM	5995-00-933-5782	CG409HU	80058	CABLE ASSEMBLY, RADIO FREQUENCY	EA	1
1	11	XAHZZ		SMD656573	80063	PRINTED WIRING ASSEMBLY	EA	1
1	12	PAHHH	6625-00-889-7037	CH1010APM270V	80058	COVER ASSEMBLY	EA	1
1	13	PAHZZ	5330-00-966-8883	NAS1998C04Y	80205	WASHER, SEALING	EA	2
1	14	XDHZZ		SMD656598	80063	PLATE, IDENTIFICATION OR	EA	1
1	14	XDHZZ		SMD656700	80063	PLATE, IDENTIFICATION OR	EA	1
1	14	XDHZZ		SMD656701	80063	PLATE, IDENTIFICATION	EA	1

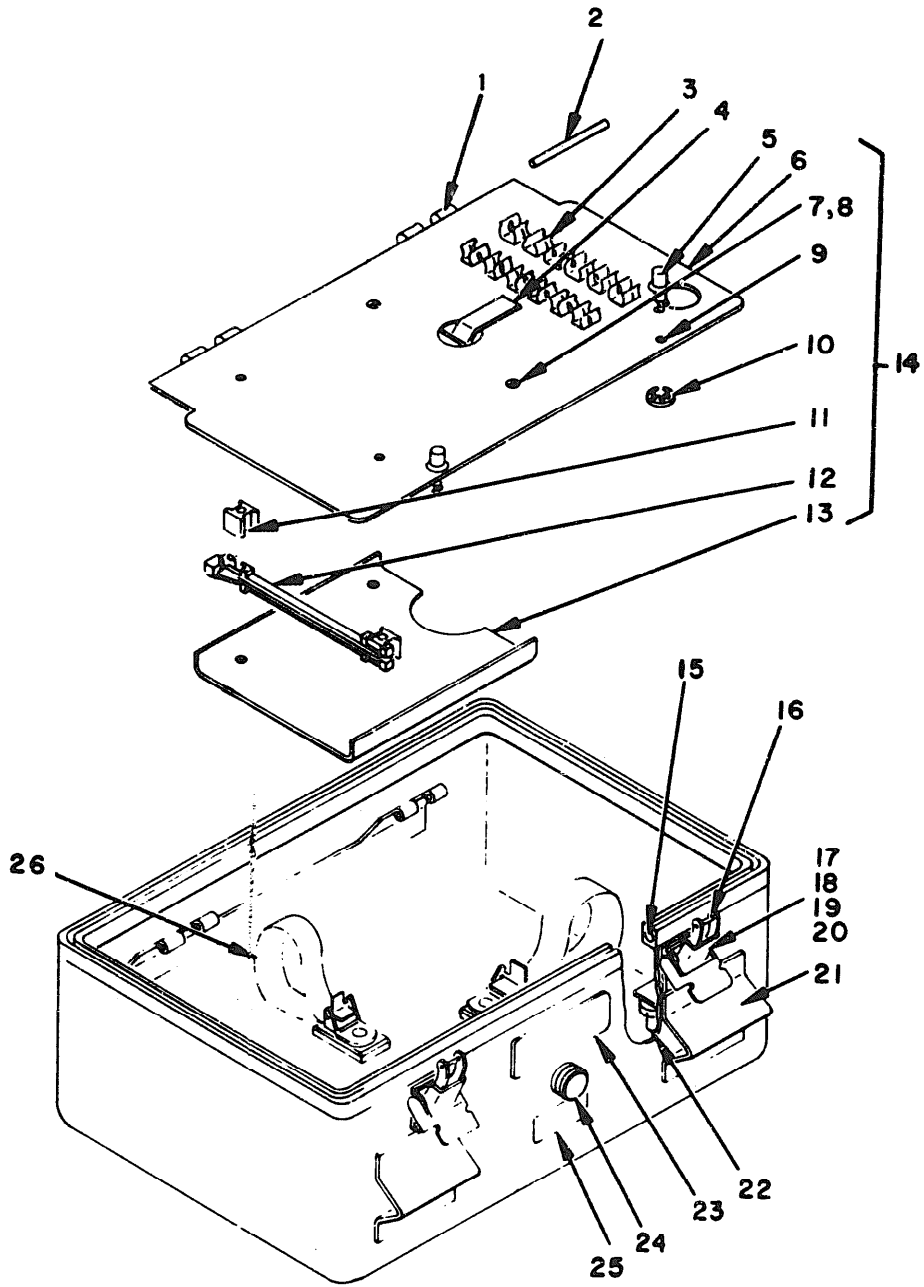


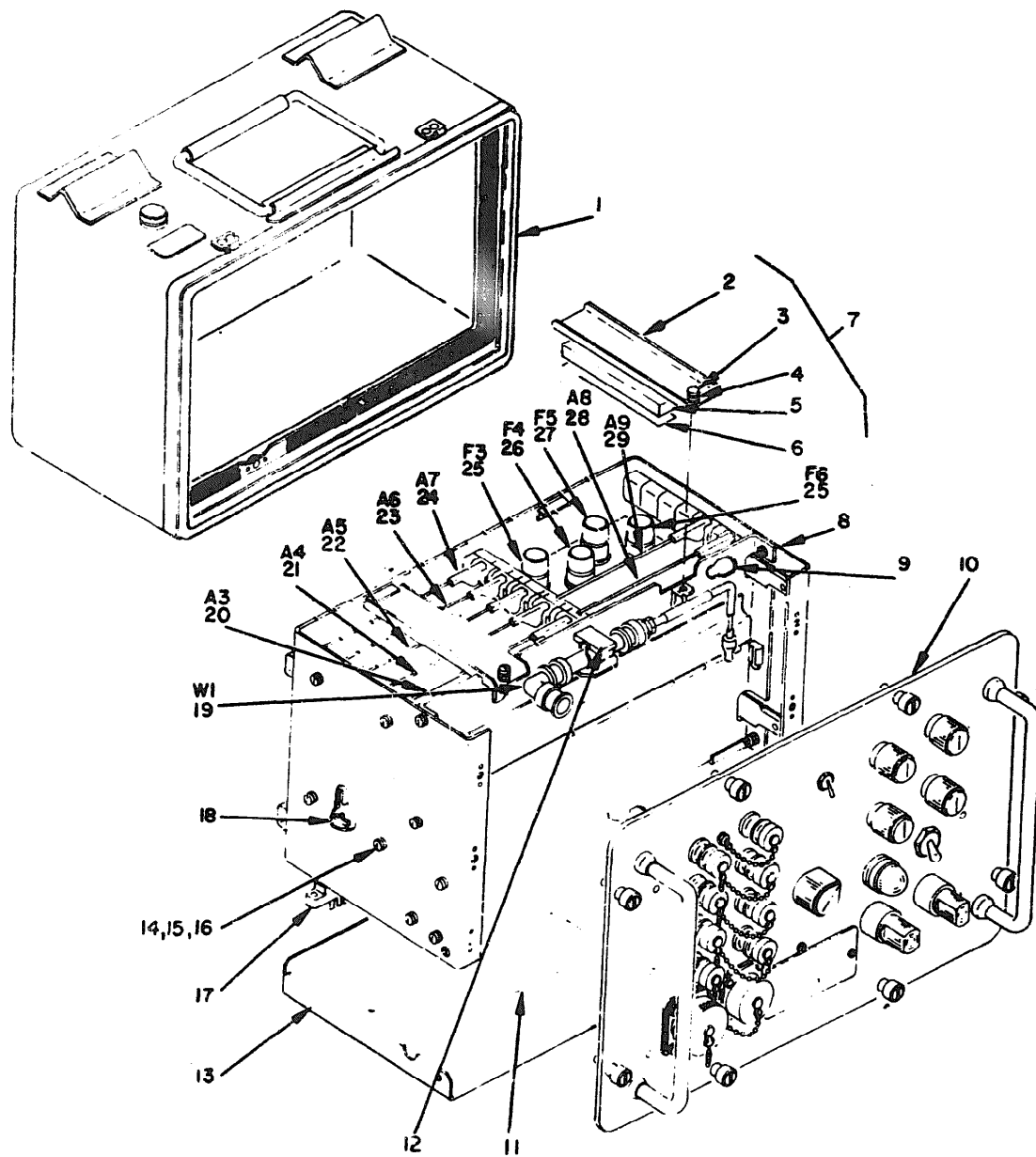
Figure 2. Cover Assembly CW-1010/APM-270(V).

## SECTION II

TM 11-6625-1644-24P

(1) ILLUSTRATION		(2)	(3)	(4)	(5)	(6)	(7)	(8)
(a) FIG NO.	(b) ITEM NO.	SMR CODE	NATIONAL STOCK NUMBER	PART NUMBER	FSCM	DESCRIPTION	USABLE ON CODE	QTY INC IN UNIT
GROUP 01 COVER ASSEMBLY CW-1010/APM-270(V)								
2	1	PAHZZ	5340-00-225-4423	ZSP4-403-1	98376	HINGE, LID		EA 2
2	2	XDHZZ		SNC656689	80063	PIN, HINGE		EA 2
2	3	PAHZZ	5999-00-131-1325	568207	71400	CLIP, FUSE		EA 12
2	4	XDHZZ		SNC656587	80063	CLIP, CIRCUIT CARD		EA 1
2	9	PAHZZ	5325-00-966-6608	15S1-3-1AF	71286	FASTENER, CYLINDER		EA 2
2	6	XDHZZ		SND656668	80063	LID, INNER		EA 1
2	7	XDHZZ	5310-00-722-5998	MS15795-805	96906	WASHER, FLAT		EA 43
2	8	PAHZZ	5305-00-054-6651	MS151957-27	96906	SCREW, MACHINE		EA 8
2	9	PAHZZ	5305-00-066-7326	MS24693C24	96906	SCREW, MACHINE		EA 4
2	10	PAHZZ	5310-00-965-9625	15S11-1AD	71286	RING, RETAINING		EA 2
2	11	PAHZZ	6625-00-118-1954	TS903-500	18977	SPACER, GUIDE		EA 4
2	12	PAHZZ	6625-00-118-1953	T31248U	18677	GUIDE, CIRCUIT CARD		EA 16
2	13	XDHZZ		SNC656674	80063	BRACKET, EXTENDER		EA 1
2	14	XDHMM		SND656653	80063	LID ASSEMBLY		EA 1
2	15	XDHZZ		ZP5035-43	98376	SEAL, CLOSURE		EA 1
2	16	XDMZZ		SNC656709	80063	SPRING, LATCH		EA 4
2	17	PAHZZ	5305-00-054-5649	MS151957-15	96906	SCREW, MACHINE		EA 22
2	18	PAHZZ	5310-00-880-5976	MS15795-806	96906	WASHER, FLAT		EA 4
2	19	PAHZZ	5310-00-929-6395	MS35338-136	96906	WASHER, LOCK		EA 4
2	20	PAHZZ	5310-00-934-9748	MS35649-244	96906	NUT, PLAIN, HEXAGON		EA 7
2	21	PAHZZ	5340-00-992-8139	ZSP2-204-1	98376	LATCH, ASSEMBLY		EA 4
2	22	PAHZZ	5325-00-065-5952	15R1-1AE	71286	RECEPTACLE, TURNLOCK		EA 1
2	23	XDHZZ		SNC656583	80058	PLATE, IDENTIFICATION		EA 1
2	24	PAHZZ	4920-00-730-3481	ZSP6-602	98376	EQUALIZER, PRESSURE		EA 1
2	25	XDHZZ		MS18020-1	96906	LABEL, INSTRUCTION		EA 1
2	26	XDMZZ		668-3-95F	00502	STRAP, HOLDOWN		EA 4





NOTE 1. CONNECTORS J3 THRU J9 ARE RECEPTACLES FOR PRINTED WIRING ASSEMBLIES A3 THRU A9 RESPECTIVELY AND ARE LOCATED ON UNDERSIDE OF CHASSIS ASSEMBLY BETWEEN SHIELD, ITEM 13 AND CHASSIS ASSEMBLY, ITEM 8.

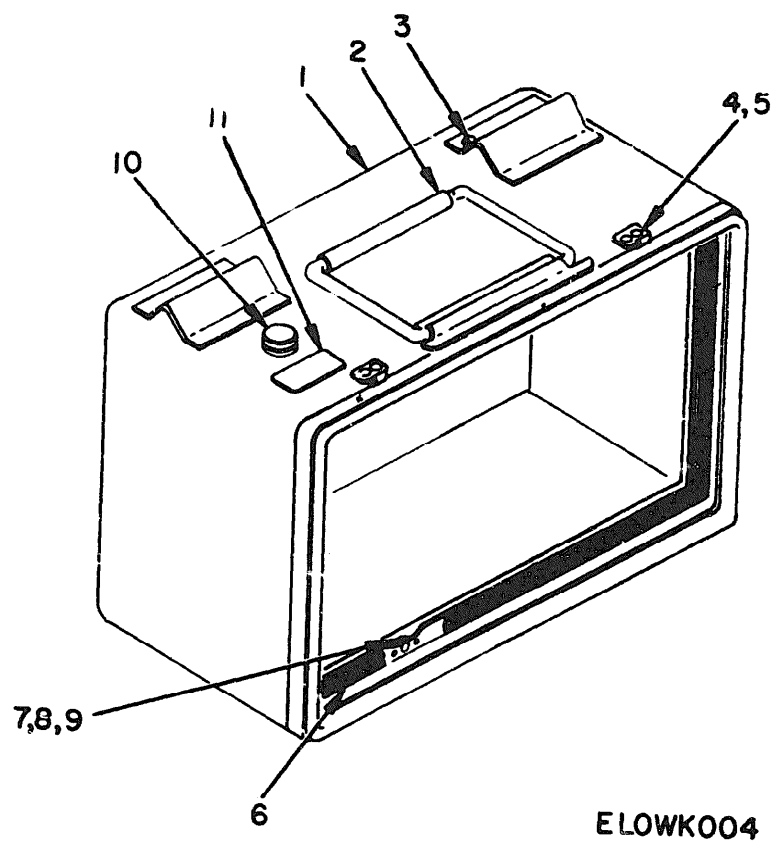
ELOWK003

Figure 3. Test Facilities Set TS-2735/APM-270(V),

## SECTION II

TM 11-6625-1044-24P

(1) ILLUSTRATION		(2)	(3)	(4)	(5)	(6)	(7)
(a) FIG NO.	(b) ITEM NO.	SMR CODE	NATIONAL STOCK NUMBER	PART NUMBER	FSCU	DESCRIPTION	U/M
						USABLE ON CODE	
GROUP 02 TEST FACILITIES SET TS-2735/APM-270(V)							
3	1	XDHMH		SMD656641	80063	CASE, ASSEMBLY	EA 1
3	2	XDMZZ		SMC656605	80063	RETAINER	EA 2
3	3	PAMZZ	5305-00-864-5732	623350632-7	06540	SCREW, CAPTIVE	EA 2
3	4	PAMZL	5310-00-773-7624	NAS520C6	80205	WASHER, FLAT	EA 2
3	5	XDMZZ		4004	76381	TAPE, POLYURETHANE	EA 2
3	6	XDMZZ		549-5665	76381	TAPE, PLASTIC	EA 2
3	7	XDMZZ		SMC656593	80063	RETAINER ASSEMBLY	EA 2
3	8	XDHMH		SMD656607	80063	CHASSIS ASSEMBLY	EA 1
3	9	XDMZZ		SMD656714	80063	WIRING HARNESS	EA 1
3	10	XDHMH		SMD656638	80063	PANEL ASSEMBLY, CONTROL	EA 1
3	11	XDMZZ		SMC568673	80063	DECAL, WARNING	EA 1
3	12	PAMZZ	5340-00-008-2108	SMC568660-3	80063	RETAINER, CLIP	EA 1
3	13	XDMZZ		SMD656715-1	80063	SHIELD	EA 1
3	14	XDMZZ	5305-00-054-5649	MS51957-15	96906	SCREW, MACHINE	EA 14
3	15	XDMZZ	5310-00-933-8118	MS35338-135	96906	WASHER, LOCK	EA 14
3	16	XDMZZ	5310-00-595-6211	MS15795-803	96906	WASHER, FLAT	EA 14
3	17	PAMZZ	5935-00-933-4015	2GH22-1AHS	05574	CONNECTOR, RECEPTACLE, ELECTRICAL	EA 7
3	18	XDMZZ	5970-00-892-3782	091-0024-000	05574	KEY POLARIZING	EA 14
3	19	XDMMH		SMC656697	80063	CABLE ASSEMBLY, RADIO FREQUENCY	EA 1
3	20	PAMMH	6625-00-105-8334	SMD656556	80063	PRINTED WIRING ASSEMBLY	EA 1
3	21	PAMMH	6625-00-105-8335	SMD656559	80063	PRINTED WIRING ASSEMBLY	EA 1
3	22	PAMMH	6625-00-105-8336	SMD656562	80063	PRINTED WIRING ASSEMBLY	EA 1
3	23	PAMMH	6625-00-105-8337	SMD656565	80063	PRINTED WIRING ASSEMBLY	EA 1
3	24	PAMMH	6625-00-105-8338	SMD656568	80063	PRINTED WIRING ASSEMBLY	EA 1
3	25	PAMZZ	5920-00-284-9492	F02A250V1-16AS	81349	FUSE, CARTRIDGE	EA 2
3	26	PAMZZ	5920-00-538-2825	F02A250V3-8AS	81349	FUSE, CARTRIDGE	EA 1
3	27	PAMZZ	5920-00-280-5031	F02A250V1-4AS	81349	FUSE, CARTRIDGE	EA 1
3	28	PAMMH	6625-00-105-8339	SMD656571	80063	PRINTED WIRING ASSEMBLY	EA 1
3	29	PAMMH	6625-00-105-8340	SMD656596	80063	PRINTED WIRING ASSEMBLY	EA 1



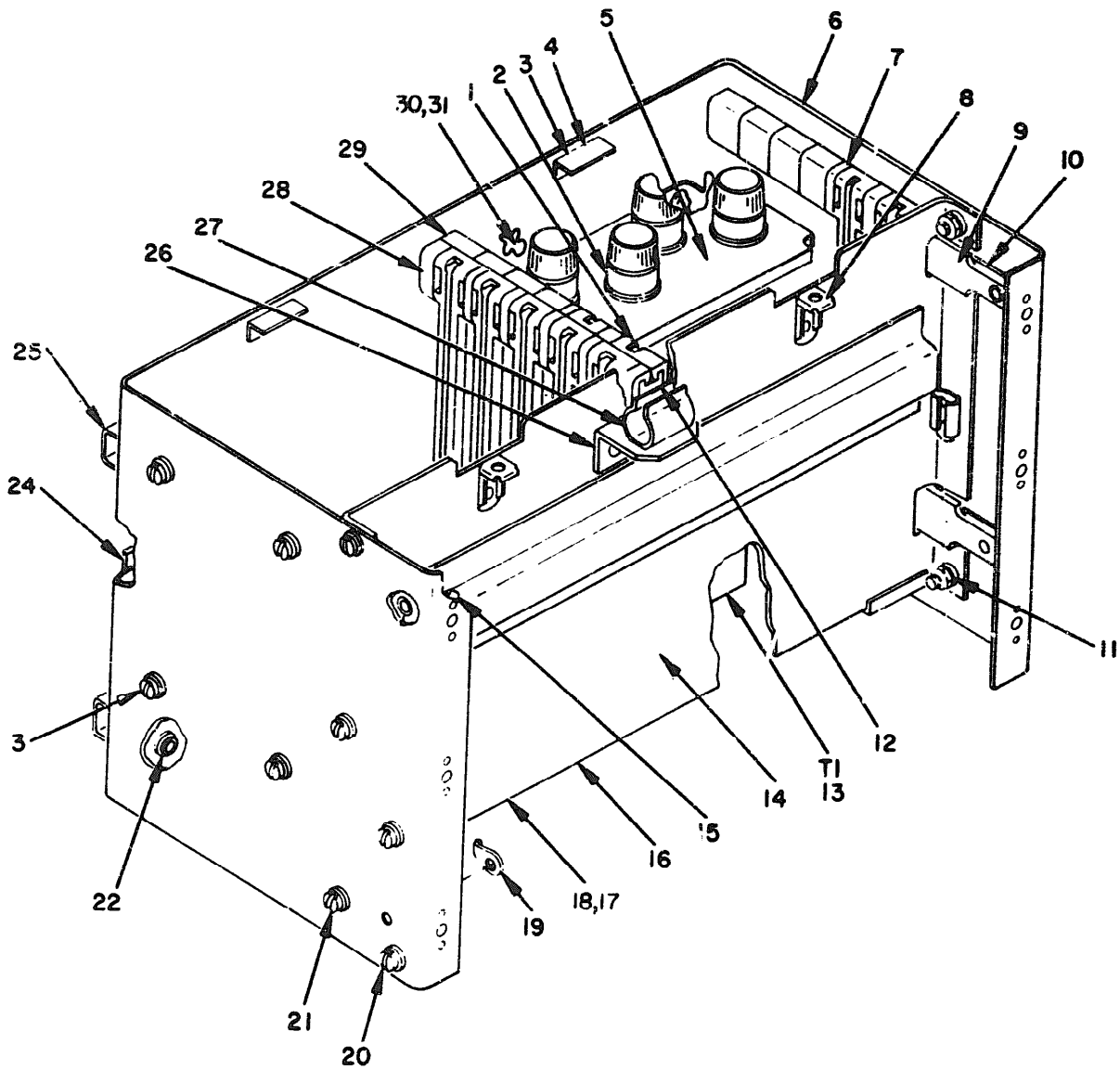
ELOWK004

Figure 4. Case Assembly.

## SECTION II

TM 11-6625-1644-24P

(1) ILLUSTRATION		(2)	(3)	(4)	(5)	(6)	(7)	(8)
(a) FIG NO.	(b) ITEM NO.	SMR CODE	NATIONAL STOCK NUMBER	PART NUMBER	FSCM	DESCRIPTION	U/M	QTY INC IN UNIT
						USABLE ON CODE		
GROUP 0201 CASE ASSEMBLY								
4	1	XDHZZ		SMD656644	80063	CASE	EA	1
4	2	XDHZZ		SMD656643	80063	HANDLE	EA	1
4	3	PAHZZ	5310-00-779-6737	MS21060L08	96906	NUT, SELF LOCKING	EA	8
4	4	XDHZZ		MS25082-8	96906	NUT, PLAIN, HEXAGON	EA	2
4	5	PAHZZ	5310-00-905-5454	MS35333-121	96906	WASHER, LOCK	EA	2
4	6	XDHZZ		SMD656589	80063	GASKET, RADIO FREQUENCY	EA	1
4	7	PAHZZ	5330-00-966-883	MS1598C04Y	80205	WASHER, SPALTING	EA	7
4	8	PAHZZ	5310-00-595-6211	MS15795-803	96906	WASHER, FLAT	EA	27
4	9	PAHZZ	5310-00-933-8118	MS35338-135	96906	WASHER, LOCK	EA	21
4	10	PAHZZ	4920-00-730-3481	ZSP6-602	98376	EQUALIZER, PRESSURE	EA	1
4	11	XDHZZ		MS18020-1	96906	LABEL, INSTRUCTION	EA	1



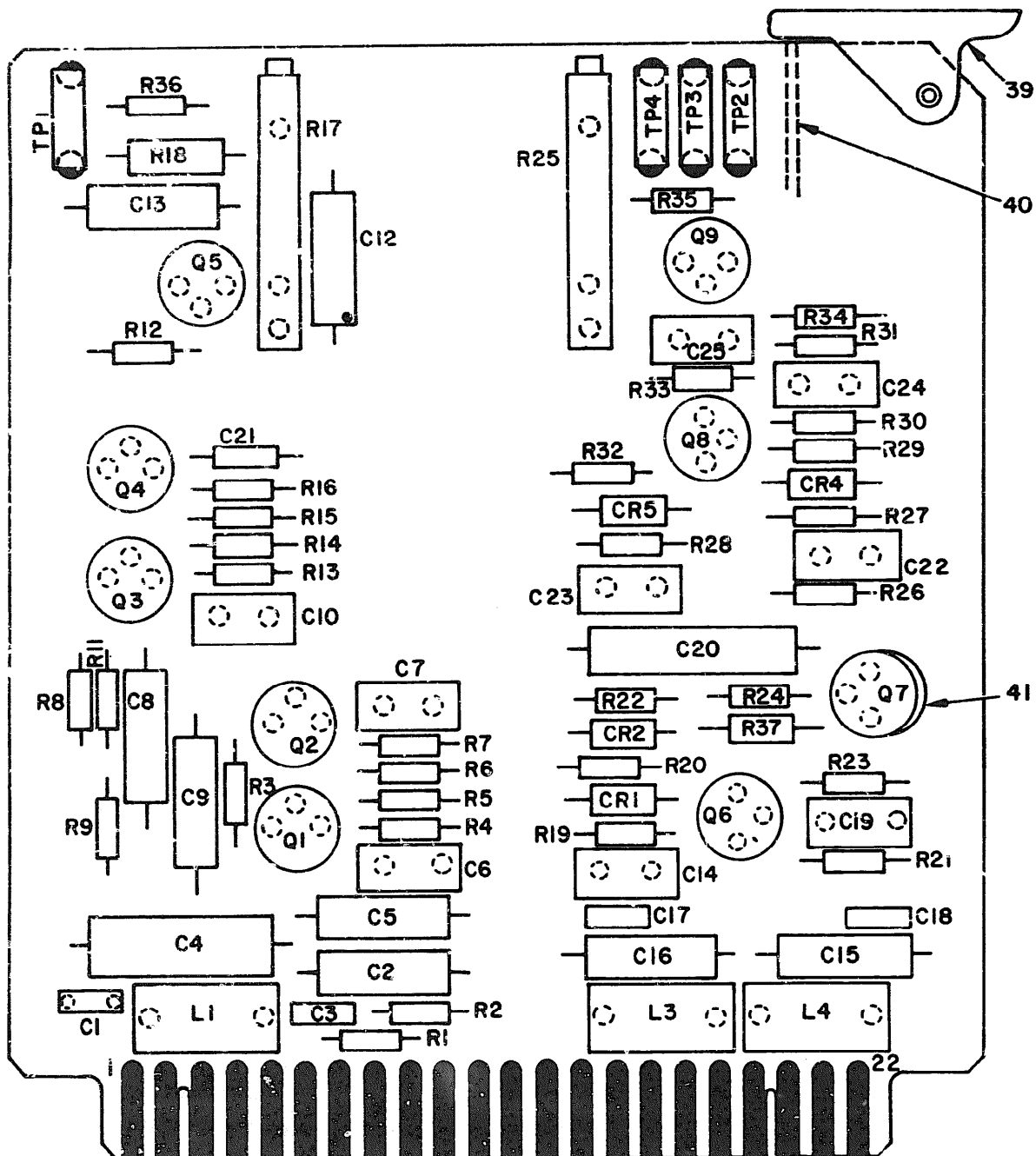
ELOWK005

Figure 5. Chassis Assembly.

## SECTION II

TM 11-6625-1644-24P

(1) ILLUSTRATION		(2)	(3)	(4)	(5)	(6)	(7)	(8)
(a) FIG NO	(b) ITEM NO	SMR CODE	NATIONAL STOCK NUMBER	PART NUMBER	FSCM	DESCRIPTION	QUAN TY	UN ITS
							TABLE ON CODE	
GROUP 0202 CHASSIS ASSEMBLY								
5	1	XCHZZ		SMD656695	80063	MOUNT, FUSEHOLDER	EA	1
5	2	PAHZZ	5920-00-892-9311	FHM26G	81349	FUSEHOLDER	EA	4
5	3	XDHZZ		SMC656606	80063	BRACKET, RETAINER	EA	2
5	4	XDHZZ		MRPN6-325X	83324	NUT, ANCHOR	EA	4
5	5	XDHMM		SMC654696	60063	MOUNT ASSEMBLY FUSE	EA	1
5	6	XDHZZ		SMD656602	80063	CHASSIS	EA	1
5	7	PAHZZ	5999-00-068-0669	T101-125	18677	SPACER, GUIDE	EA	20
5	8	PAHZZ	5310-00-843-7635	MF6001-06	15653	NUT, ANCHOR	EA	2
5	9	XDHZZ		SMC656600	80063	BAR, MOUNTING	EA	4
5	10	XDHZZ		SMC656628	80063	SPACER, MOUNTING BAR	EA	4
5	11	PAHZZ	5310-00-778-9166	MS21062L06	96906	NUT, SELF LOCKING	EA	2
5	12	XDHZZ		T903-3-720	18677	BAR, SUPPORT	EA	2
5	13	XCHZZ		60-501-64	05254	TRANSFORMER, POWER	EA	1
5	14	XDHMM		SMD656606	80063	BULKHEAD ASSEMBLY	EA	1
5	15	PAHZZ	5310-00-771-7396	MS21076L06	96906	NUT, SELF LOCKING	EA	4
5	16	XDHZZ		SMD656592	30063	BULKHEAD	EA	1
5	17	PAHZZ	5305-00-066-7328	MS24693C27	96906	SCREW, MACHINE	EA	8
5	18	PAHZZ	5310-00-934-9761	MS3549-264	96906	NUT, PLAIN, HEXAGON	EA	6
5	19	PAHZZ	5940-00-050-2308	MS35431-3	96906	TERMINAL, LUG	EA	2
5	20	XDHZZ		MS51957-14	96906	SCREW, MACHINE	EA	14
5	21	PAHZZ	5305-00-494-7334	MS51957-28	96906	SCREW, MACHINE	EA	28
5	22	XDHZZ		SMC656731	80063	NUT PLATE	EA	1
5	23	PAHZZ	5305-00-054-6653	MS51957-29	96906	SCREW, MACHINE	EA	19
5	24	XDHZZ		SMC656591	80063	BAR, GUIDE PIN	EA	2
5	25	XDHZZ		SMD656698	80063	CHASSIS, WELDMENT	EA	1
5	26	XDHZZ		SMC656637	80063	SUPPORT, CLIP	EA	1
5	27	PAHZZ	5340-00-060-9029	MS17160-24	96906	CLIP, SPRING TENSION	EA	1
5	28	PAHZZ	5999-00-068-0666	T101-250	18677	SPACER, GUIDE	EA	20
5	29	PAHZZ	565-00-407-3541	T101-500	18677	SPACER, GUIDE	EA	16
5	30	PAHZZ	5305-00-969-4356	R6-32-7-16	97539	SCREW, MACHINE	EA	6
5	31	PAHZZ	5310-00-929-6395	MS35338-136	96906	WASHER, SEAL	EA	1



NOTE: PREFIX ALL REFERENCE DESIGNATIONS WITH A3.

ELOWK006

Figure 6. Printed Wiring Assembly (A3) (Sheet 1 of 2).

REF. DES.	ITEM NO.	REF. DES.	ITEM NO.	REF. DES.	ITEM NO.	REF. DES.	ITEM NO.
C1	1	C22	11	Q9	16	R21	30
C2	2	C23	11	R1	17	R22	26
C3	1	C24	8	R2	18	R23	31
C4	3	C25	8	R3	19	R24	32
C5	2	CR1	12	R4	20	R25	28
C6	4	CR2	12	R5	21	R26	33
C7	5	CR3	—	R6	22	R27	17
C8	2	CR4	12	R7	23	R28	17
C9	2	CR5	12	R8	24	R29	26
C10	6	L1	13	R9	25	R30	31
C12	2	L3	13	R11	24	R31	30
C13	2	L4	13	R12	26	R32	26
C14	6	Q1	14	R13	27	R33	31
C15	7	Q2	14	R14	21	R34	30
C16	7	Q3	14	R15	24	R35	33
C17	1	Q4	14	R16	24	R36	34
C18	1	Q5	15	R17	28	TPI	35
C19	8	Q6	16	R18	29	TP2	36
C20	9	Q7	16	R19	17	TP3	37
C21	10	Q8	16	R20	26	TP4	38

ELOWK007

Figure 6. Printed Wiring Assembly (A3), Legend (Sheet 2 of 2).



## SECTION II

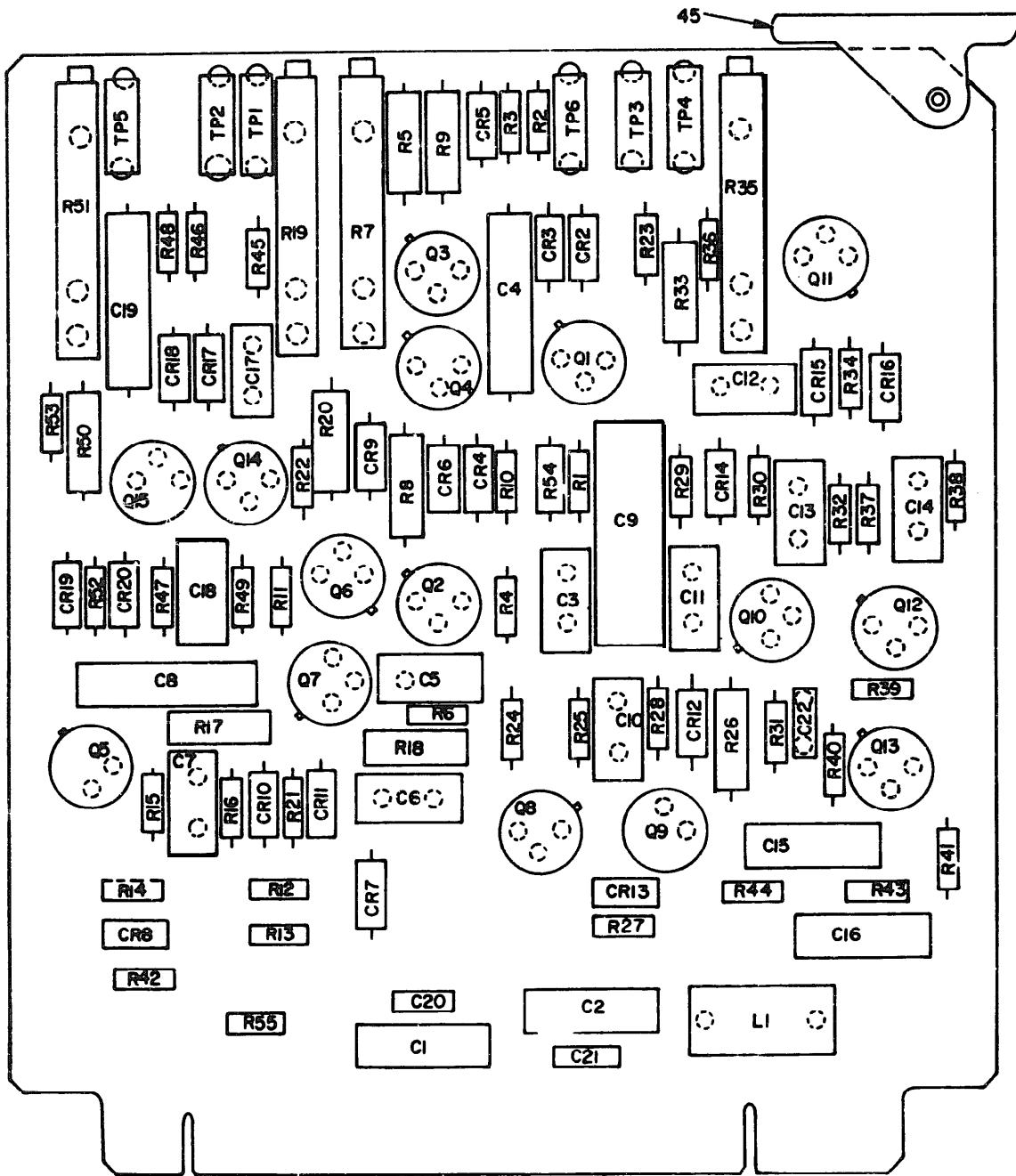
TM 11-6625-1644-24P

(1) ILLUSTRATION		(2)	(3)	(4)	(5)	(6) DESCRIPTION	(7)	(8) QTY INC IN UNIT
(a) FIG NO.	(b) ITEM NO.	SNR CODE	NATIONAL STOCK NUMBER	PART NUMBER	FSCM	USABLE ON CODE	U/M	
GROUP 0203 PRINTED WIRING ASSEMBLY (A3)								
6	1	PANZZ	5910-00-010-8718	CK06CW103K	81349	CAPACITOR, FIXED, CERAMIC	EA	4
6	2	PANZZ	5910-00-144-4381	M26655-20174	81349	CAPACITOR, FIXED, TANTALUM	EA	6
6	3	PANZZ	5910-00-160-5469	M26655-20186	81349	CAPACITOR, FIXED, TANTALUM	EA	1
6	4	XDNZZ		CM05FD151J03	81349	CAPACITOR, FIXED, MICA	EA	1
6	5	PANZZ	5910-00-902-0335	CM05ED100J03	81349	CAPACITOR, FIXED, MICA	EA	1
6	6	PANZZ	5910-00-460-0868	CM05FD101J03	81349	CAPACITOR, FIXED, MICA	EA	2
6	7	PANZZ	5910-00-007-2003	M26655-20098	81349	CAPACITOR, FIXED, TANTALUM	EA	2
6	8	PANZZ	5910-00-836-4535	CM05ED270J03	81349	CAPACITOR, FIXED, MICA	EA	3
6	9	PANZZ	5910-00-1266-6914	M19978-1-1285	81349	CAPACITOR, FIXED, PLASTIC	EA	1
6	10	PANZZ	5910-00-893-6745	CK05CW102K	81349	CAPACITOR, FIXED, CERAMIC	EA	1
6	11	PANZZ	5910-00-022-5655	CM05FD361J03	81349	CAPACITOR, FIXED, MICA	EA	2
6	12	PANZZ	5961-00-842-9864	1N914	80131	DIODE	EA	4
6	13	PANZZ	5950-00-926-3145	MS18100-27	96906	COIL, RADIO FREQUENCY	EA	3
6	14	PANZZ	5961-00-951-8757	2M2222A	81349	TRANSISTOR	EA	4
6	15	PANZZ	5961-00-949-1432	2M2219A	80131	TRANSISTOR	EA	1
6	16	PANZZ	5961-00-926-0135	2M2481	81349	TRANSISTOR	EA	4
6	17	PANZZ	5905-00-119-3504	RC07GF273J	81349	RESISTOR, FIXED, COMPOSITION	EA	4
6	18	PANZZ	5905-00-105-7768	RC07GF561J	81349	RESISTOR, FIXED, COMPOSITION	EA	1
6	19	PANZZ	5905-00-683-7723	RC07GF152J	81349	RESISTOR, FIXED, COMPOSITION	EA	1
6	20	PANZZ	5905-00-683-2240	RC07GF221J	81349	RESISTOR, FIXED, COMPOSITION	EA	1
6	21	PANZZ	5905-00-691-0195	RC07GF562J	81349	RESISTOR, FIXED, COMPOSITION	EA	2
6	22	PANZZ	5905-00-800-8063	RC07GF112J	81349	RESISTOR, FIXED, COMPOSITION	EA	1
6	23	PANZZ	5905-00-683-2236	RC07GF391J	81349	RESISTOR, FIXED, COMPOSITION	EA	1
6	24	PANZZ	5905-00-686-9996	RC07GF821J	81349	RESISTOR, FIXED, COMPOSITION	EA	4
6	25	PANZZ	5905-00-119-3505	RC07GF683J	81349	RESISTOR, FIXED, COMPOSITION	EA	1
6	26	PANZZ	5905-00-723-5251	RC07GF222J	81349	RESISTOR, FIXED, COMPOSITION	EA	5
6	27	PANZZ	5905-00-683-2247	RC07GF121J	81349	RESISTOR, FIXED, COMPOSITION	EA	1
6	28	PANZZ	5905-00-689-9600	RT12C2P103	81349	RESISTOR, VARIABLE, WIRE WOUND	EA	2
6	29	PANZZ	5905-00-279-1890	RC20GF391J	81349	RESISTOR, FIXED, COMPOSITION	EA	1
6	30	PANZZ	5905-00-683-2246	RC07GF473J	81349	RESISTOR, FIXED, COMPOSITION	EA	3
6	31	PANZZ	5905-00-686-9997	RC07GF682J	81349	RESISTOR, FIXED, COMPOSITION	EA	3
6	32	PANZZ	5905-00-686-9990	RC07GF472J	81349	RESISTOR, FIXED, COMPOSITION	EA	1
6	33	PANZZ	5905-00-686-9994	RC07GF122J	81349	RESISTOR, FIXED, COMPOSITION	EA	2
6	34	PANZZ	5905-00-681-8819	RC07GF184J	81349	RESISTOR, FIXED, COMPOSITION	EA	1
6	35	PANZZ	5935-00-854-7465	3-582110-1	00779	JACK, TIP	EA	1
6	36	PANZZ	5935-00-061-7744	3-582110-2	00779	JACK, TIP	EA	1
6	37	PANZZ	5935-00-808-6134	3-582110-3	00779	JACK, TIP	EA	1
6	38	PANZZ	5935-00-964-9305	3-582110-0	00779	JACK, TIP	EA	1
6	39	XDNZZ		SNC656576-3	80063	EJECTOR, CARD	EA	1

## SECTION II

TM 11-6625-1644-24P

(1) ILLUSTRATION		(2) SMR CODE	(3) NATIONAL STOCK NUMBER	(4) PART NUMBER	(5) FCOM	(6) DESCRIPTION  USABLE ON CODE	(7) U/M	(8) QTY INC IN UNIT
(a) FIG NO.	(b) ITEM NO.							
6	40	PANZZ	5999-00-929-3950	3203	18677	EJECTOR	EA	7
6	41	XIHZZ		10269	07047	INSULATOR, STANDOFF	EA	57



NOTE: PREFIX ALL REFERENCE DESIGNATIONS WITH A4  
 FIGURE 7. PRINTED WIRING ASSEMBLY A 4

ELOWK008

Figure 7. Printed Wiring Assembly (A4) (Sheet 1 of 2).

REF DES	ITEM NO	REF DES	ITEM NO	REF DES	ITEM NO	REF DES	ITEM NO	REF DES	ITEM NO	REF DES	ITEM NO
C1	1	C21	12	CR20	13	R4	21	R24	21	R44	35
C2	1	C22	12	L1	14	R5	22	R25	23	R45	36
C3	2	CR2	13	Q1	15	R6	23	R26	29	R46	19
C4	3	CR3	13	Q2	15	R7	24	R27	21	R47	21
C5	4	CR4	13	Q3	16	R8	25	R28	20	R48	19
C6	5	CR5	13	Q4	17	R9	26	R29	27	R49	23
C7	4	CR6	13	Q5	15	R10	21	R30	20	R50	37
C8	6	CR7	13	Q6	16	R11	20	R31	21	R51	24
C9	7	CR8	13	Q7	17	R12	27	R32	23	R52	21
C10	4	CR9	13	Q8	15	R13	19	R33	30	R53	20
C11	5	CR10	13	Q9	17	R14	20	R34	21	R54	35
C12	8	CR11	13	Q10	15	R15	21	R35	24	R55	38
C13	4	CR12	13	Q11	17	R16	23	R36	20	TP1	39
C14	9	CR13	13	Q12	15	R17	22	R37	31	TP2	40
C15	10	CR14	13	Q13	16	R18	25	R38	32	TP3	41
C16	10	CR15	13	Q14	15	R19	24	R39	20	TP4	42
C17	5	CR16	13	Q15	17	R20	28	R40	20	TP5	43
C18	4	CR17	13	R1	18	R21	21	R41	33	TP6	44
C19	11	CR18	13	R2	19	R22	20	R42	18		
C20	12	CR19	13	R3	20	R23	20	R43	34		

ELOWK009

Figure 7. Printed Wiring Assembly (A4), Legend (Sheet 2 of 2).

(1) ILLUSTRATION		(2)	(3)	(4)	(5)	(6)	(7)	(8)
(a) FIG NO.	(b) ITEM NO.	SMR CODE	NATIONAL STOCK NUMBER	PART NUMBER	FSCM	DESCRIPTION  USABLE ON CODE	U/M	QTY INC IN UNIT
GROUP 0204 PRINTED WIRING ASSEMBLY (A4)								
7	1	PANZZ	5910-00-007-2003	M26622-2-009A	81349	CAPACITOR, FIXED, TANTALUM	EA	2
7	2	PANZZ	5910-00-022-5655	CM05FD361J03	81349	CAPACITOR, FIXED, MICA	EA	1
7	3	XIRZZ		05PL273JS	12517	CAPACITOR, FIXED, PLASTIC	EA	1
7	4	PANZZ	5910-00-044-4355	CM05ED470J03	81349	CAPACITOR, FIXED, MICA	EA	5
7	5	PANZZ	5910-00-460-0868	CM05FD101J03	81349	CAPACITOR, FIXED, MICA	EA	3
7	6	PANZZ	5910-00-830-4884	05PL333JS	12517	CAPACITOR, FIXED, PLASTIC	EA	1
7	7	PANZZ	5910-00-929-2385	M19978-1-1305J	81349	CAPACITOR, FIXED, MICA	EA	1
7	8	PANZZ	5910-00-952-1549	CM05F0391J03	81349	CAPACITOR, FIXED, MICA	EA	1
7	9	PANZZ	5910-00-836-4535	CM05ED270J03	81349	CAPACITOR, FIXED, MICA	EA	1
7	10	PANZZ	5910-00-144-4381	M26655-2-0174	81349	CAPACITOR, FIXED, TANTALUM	EA	2
7	11	PANZZ	5910-00-126-1760	05PL202JS	12517	CAPACITOR, FIXED, PLASTIC	EA	1
7	12	PANZZ	5910-00-010-8718	CK06CH103K	81349	CAPACITOR, FIXED, CERAMIC	EA	3
7	13	PANZZ	5961-00-842-9864	1M914	80131	DIODE	EA	19
7	14	PANZZ	5950-00-926-3145	HS10100-27	96906	COIL, RADIO FREQUENCY	EA	1
7	15	PANZZ	5961-00-951-8757	2N2222A	81349	TRANSISTOR	EA	7
7	16	PANZZ	5996-00-911-6015	2N3251A	81349	TRANSISTOR	EA	3
7	17	PANZZ	5961-00-926-0135	2N2401	81349	TRANSISTOR	EA	5
7	18	PANZZ	5905-00-141-1183	RC07GF101J	81349	RESISTOR, FIXED, COMPOSITION	EA	2
7	19	PANZZ	5905-00-723-5251	RC07GF222J	81349	RESISTOR, FIXED, COMPOSITION	EA	4
7	20	PANZZ	5905-00-686-9994	RC07GF122J	81349	RESISTOR, FIXED, COMPOSITION	EA	11
7	21	PANZZ	5905-00-682-4105	RC07GF224J	81349	RESISTOR, FIXED, COMPOSITION	EA	10
7	22	PANZZ	5905-00-080-0650	RM60E8250F	81349	RESISTOR, FIXED, FILM	EA	2
7	23	PANZZ	5905-00-726-4413	RC07GF123J	81349	RESISTOR, FIXED, COMPOSITION	EA	5
7	24	PANZZ	5905-00-689-6799	RT12C2P502	81349	RESISTOR, VARIABLE	EA	4
7	25	PANZZ	590-00-432-5848	RM60E1872F	81349	RESISTOR, FIXED, FILM	EA	2
7	26	PANZZ	5905-00-902-7947	RM60E2611F	81349	RESISTOR, FIXED, FILM	EA	1
7	27	PANZZ	5905-00-119-3504	RC07GF273J	81349	RESISTOR, FIXED, COMPOSITION	EA	2
7	28	PANZZ	5905-00-452-1262	RC60E2001F	81349	RESISTOR, FIXED, FILM	EA	1
7	29	PANZZ	5905-00-061-2136	RM60E7501F	81349	RESISTOR, FIXED, FILM	EA	1
7	30	PANZZ	5905-00-851-7165	RM60E5111F	81349	RESISTOR, FIXED, FILM	EA	1
7	31	PANZZ	5905-00-681-8818	RC07GF153J	81349	RESISTOR, FIXED, COMPOSITION	EA	1
7	32	PANZZ	5905-00-683-2246	RC07GF473J	81349	RESISTOR, FIXED, COMPOSITION	EA	1
7	33	PANZZ	5905-00-683-2233	RC07GF910J	81349	RESISTOR, FIXED, COMPOSITION	EA	1
7	34	PANZZ	5905-00-727-8001	RC07GF601J	81349	RESISTOR, FIXED, COMPOSITION	EA	1
7	35	PANZZ	5905-00-683-2240	RC07GF221J	81349	RESISTOR, FIXED, COMPOSITION	EA	2
7	36	PANZZ	5905-00-106-3666	RC07GF103J	81349	RESISTOR, FIXED, COMPOSITION	EA	1
7	37	PANZZ	5905-00-851-7151	RM60E3161F	81349	RESISTOR, FIXED, FILM	EA	1
7	38	PANZZ	5905-00-455-4403	RC07QP2R70	81349	RESISTOR, FIXED, COMPOSITION	EA	1
7	39	PANZZ	5935-00-854-7465	3-582110-1	00779	JACK, TIP	EA	1

## SECTION II

TM 11-6625-1644-24P

(1) ILLUSTRATION		(2)	(3)	(4)	(5)	(6)	(7)	(8)
(a) FIG NO.	(b) ITEM NO.	SMR CODE	NATIONAL STOCK NUMBER	PART NUMBER	FSCM	DESCRIPTION	USABLE ON CODE	QTY INC IN UNIT
7	40	PAHZZ	5935-00-061-7744	3-582110-2	00779	JACK, TIP		EA 1
7	41	PAHZZ	5935-00-808-6134	3-582110-3	00779	JACK, TIP		EA 1
7	42	PAHZZ	5935-00-717-1351	3-582110-4	00779	JACK, TIP		EA 1
7	43	PAHZZ	5935-00-812-6415	3-582110-5	00779	JACK, TIP		EA 1
7	44	PAHZZ	5935-00-964-3905	3-582110-0	00779	JACK, TIP		EA 1
7	45	XDHZZ		SME656576-4	80063	EJECTOR, CARD		EA 1



REF. DES.	ITEM NO.	REF. DES.	ITEM NO.	REF. DES.	ITEM NO.	REF. DES.	ITEM NO.	REF. DES.	ITEM NO.	REF. DES.	ITEM NO.
C1	1	C21	12	CR14	15	R1	21	R21	21	R42	28
C2	2	C22	2	CR15	15	R2	22	R22	34	R43	27
C3	3	C23	13	CR17	15	R3	23	R23	35	R44	45
C4	3	C24	13	CR18	15	R4	24	R24	36	R45	46
C5	2	C25	13	L2	16	R5	24	R25	37	R46	28
C6	4	C26	3	L3	16	R6	23	R26	38	R47	22
C7	5	C27	14	L4	17	R7	22	R27	34	R48	47
C8	2	CR1	15	L5	17	R8	21	R28	39	TP1	48
C9	6	CR2	15	Q1	18	R9	25	R29	40	TP2	49
C10	6	CR3	15	Q2	18	R10	26	R30	41	TP3	50
C11	1	CR4	15	Q3	19	R11	26	R31	42	TP4	51
C12	1	CR5	15	Q4	20	R12	27	R32	26		
C13	7	CR6	15	Q5	18	R13	23	R33	26		
C14	1	CR7	15	Q6	19	R14	29	R34	26		
C15	8	CR8	15	Q7	18	R15	28	R35	26		
C16	9	CR9	15	Q8	18	R16	30	R36	43		
C17	10	CR10	15	Q9	18	R17	31	R37	44		
C18	10	CR11	15	Q10	18	R18	32	R38	22		
C19	1	CR12	15	Q11	19	R19	22	R39	22		
C20	11	CR13	15	Q12	18	R20	33	R40	22		

ELOWK011

Figure 8, Printed Wiring Assembly (A5), Legend (Sheet 2 of 2).



## SECTION II

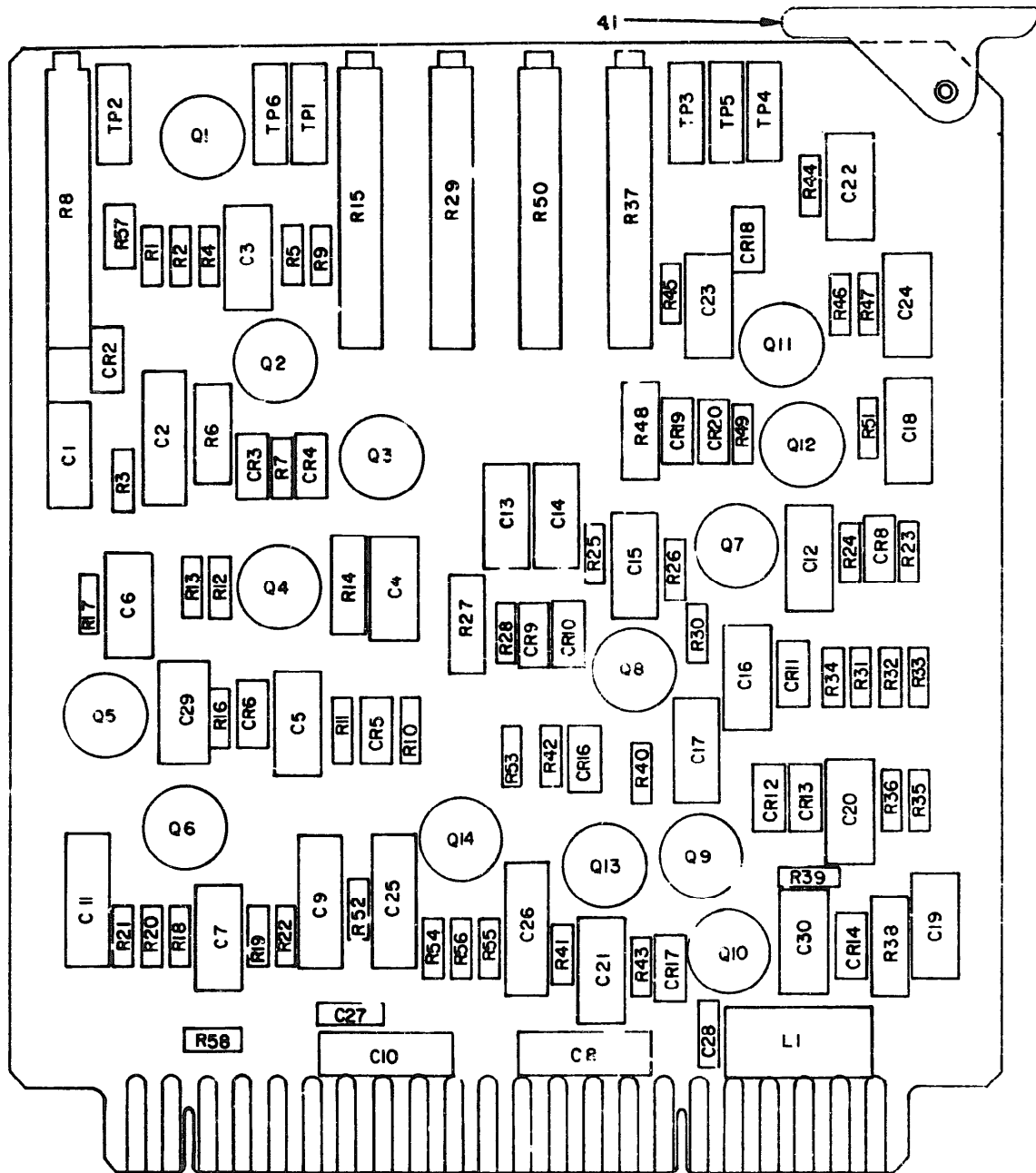
TM 11-6625-1644-24P

(1) ILLUSTRATION		(2)	(3)	(4)	(5)	(6) DESCRIPTION	(7)	(8)
(A) FIG NO.	(B) ITEM NO.	SMR CODE	NATIONAL STOCK NUMBER	PART NUMBER	FBCM	USABLE ON CODE	U/M	QTY INC IN UNIT
GROUP 0205 PRINTED WIRING ASSEMBLY (A5)								
8	1	PAH22	5910-00-007-2003	M26655-2-0098	81349	CAPACITOR, FIXED, TANTALUM	EA	5
8	2	PAM22	5910-00-044-4355	CH05ED470J03	81349	CAPACITOR, FIXED, MICA	EA	4
8	3	PAH22	5910-00-836-4535	CH05ED270J03	81349	CAPACITOR, FIXED, MICA	EA	3
8	4	PAM22	5910-00-460-0868	CH05FD101J03	81349	CAPACITOR, FIXED, MICA	EA	1
8	5	XDH22		05PL392JS	12517	CAPACITOR, FIXED, PLASTIC	EA	1
8	6	PAM22	5910-00-236-8745	M26655-2-0122	81349	CAPACITOR, FIXED, ELEC	EA	2
8	7	XDH22		MNC629	73899	CAPACITOR, VARIABLE	EA	1
8	8	XDH22		CY12C750J	81349	CAPACITOR, FIXED, GLASS	EA	1
8	9	PAH22	5910-00-898-9616	CY12C820J	81349	CAPACITOR, FIXED, GLASS	EA	1
8	10	PAH22	5910-00-702-8057	CH05FD331J03	81349	CAPACITOR, FIXED, MICA	EA	2
8	11	PAH22	5910-00-169-3951	CH05ED620J03	81349	CAPACITOR, FIXED, MICA	EA	1
8	12	PAM22	5910-00-456-0810	CH05FD910J03	81349	CAPACITOR, FIXED, MICA	EA	1
8	13	PAH22	5910-00-010-8718	CK06CH103K	81349	CAPACITOR, FIXED, CERAMIC	EA	3
8	14	XDH22		M26655-2-0004	81349	CAPACITOR, FIXED, TANTALUM	EA	1
8	15	PAH22	5961-00-842-9864	1N914	88131	DIODE	EA	17
8	16	PAM22	5950-00-926-3145	MS18100-27	96906	COIL, RADIO FREQUENCY	EA	2
8	17	PAM22	5950-00-726-8391	9210-84	76493	COIL, RADIO FREQUENCY	EA	2
8	18	PAM22	5961-00-926-0135	2N2481	81349	TRANSISTOR	EA	8
8	19	PAM22	5961-00-951-8757	2N2222A	81349	TRANSISTOR	EA	3
8	20	PAM22	5961-00-911-6015	2N3251A	81349	TRANSISTOR	EA	1
8	21	PAM22	5905-00-104-8358	RC07GF822J	81349	RESISTOR, FIXED, COMPOSITION	EA	3
8	22	PAM22	5905-00-686-9994	RC07GF122J	81349	RESISTOR, FIXED, COMPOSITION	EA	6
8	23	PAM22	5905-00-686-9997	RC07GF682J	81349	RESISTOR, FIXED, COMPOSITION	EA	2
8	24	PAM22	5905-00-683-2246	RC07GF473J	81349	RESISTOR, FIXED, COMPOSITION	EA	2
8	25	PAH22	5905-00-119-3504	RC07GF273J	81349	RESISTOR, FIXED, COMPOSITION	EA	1
8	26	PAM22	5905-00-723-5251	RC07GF222J	81349	RESISTOR, FIXED, COMPOSITION	EA	6
8	27	PAM22	5905-00-726-4413	RC07GF123J	81349	RESISTOR, FIXED, COMPOSITION	EA	2
8	28	PAM22	5905-00-682-4105	RC07GF224J	81349	RESISTOR, FIXED, COMPOSITION	EA	4
8	29	PAM22	5905-00-765-5454	RM60E9091F	81349	RESISTOR, FIXED, COMPOSITION	EA	1
8	30	PAM22	59005-00-761-5409	RT12C2P202	81349	RESISTOR, VARIABLE, WIRE WOUND	EA	1
8	31	PAM22	5905-00-851-7165	RM60E5111F	81349	RESISTOR, FIXED, FILM	EA	1
8	32	PAM22	5905-00-912-7789	RM60E6191F	81349	RESISTOR, FIXED, FILM	EA	1
8	33	PAM22	5905-00-688-3738	RC07GF182J	81349	RESISTOR, FIXED, COMPOSITION	EA	1
8	34	PAM22	5905-00-681-8818	RC07GF153J	81349	RESISTOR, FIXED, COMPOSITION	EA	2
8	35	PAM22	5905-00-141-1183	RC07GF101J	81349	RESISTOR, FIXED, COMPOSITION	EA	1
8	36	PAM22	5905-00-603-2233	RC07GF910J	81349	RESISTOR, FIXED, COMPOSITION	EA	1
8	37	PAM22	5905-00-727-8001	RC07GF681J	81349	RESISTOR, FIXED, COMPOSITION	EA	1
8	38	PAM22	5905-00-681-6462	RC07GF102J	81349	RESISTOR, FIXED, COMPOSITION	EA	1
8	39	PAM22	5905-00-686-3370	RC07GF202J	81349	RESISTOR, FIXED, COMPOSITION	EA	1

## SECTION II

TM 11-6625-1644-24P

(1) ILLUSTRATION		(2)	(3)	(4)	(5)	(6)	(7)	(8)
(a) FIG NO.	(b) ITEM NO.	SMR CODE	NATIONAL STOCK NUMBER	PART NUMBER	FSCM	DESCRIPTION	USABLE ON CODE	QTY INC IN UNIT
0	40	PAHZZ	5905-00-105-7768	RC07GF561J	81349	RESISTOR, FIXED, COMPOSITION		EA 1
0	41	PAHZZ	5905-00-043-0251	RT12C2P501	81349	RESISTOR, VARIABLE, WIRE WOUND		EA 1
0	42	PAHZZ	5905-00-686-9996	RC07GF821J	81349	RESISTOR, FIXED, COMPOSITION		EA 1
0	43	PAHZZ	5905-00-111-4727	RC07GF272J	81349	RESISTOR, FIXED, COMPOSITION		EA 1
0	44	XDHZZ		RC07GF292J	81349	RESISTOR, FIXED, COMPOSITION		EA 1
0	45	PAHZZ	5905-00-851-7151	RN60E3161F	81349	RESISTOR, FIXED, FILM		EA 1
0	46	PAHZZ	5905-00-689-6799	RJ12C2P502	81349	RESISTOR, VARIABLE, WIRE WOUND		EA 1
0	47	PAHZZ	5905-00-889-0201	RC07GF2R7J	81349	RESISTOR, FIXED, COMPOSITION		EA 1
0	48	PAHZZ	5935-00-854-7465	3-582118-1	00779	JACK, TIP		EA 1
0	49	PAHZZ	5935-00-964-3905	3-582118-0	00779	JACK, TIP		EA 1
0	50	PAHZZ	5935-00-808-6134	3-582118-3	00779	JACK, TIP		EA 1
0	51	PAHZZ	5935-00-717-1351	3-582118-4	00779	JACK, TIP		EA 1
0	52	XDHZZ		SNC656576-5	80063	EJECTOR, CARD		EA 1



NOTE: FOR COMPLETE REFERENCE DESIGNATION  
PREFIX WITH A6

ELOWK012

Figure 9. Printed Wiring Assembly (A6) (Sheet 1 of 2).

REF. DES.	ITEM NO.	REF. DES.	ITEM NO.	REF. DES.	ITEM NO.	REF. DES.	ITEM NO.	REF. DES.	ITEM NO.	REF. DES.	ITEM NO.
C1	1	C22	4	CR16	12	R2	18	R23	28	R44	28
C2	2	C23	9	CR17	12	R3	19	R24	19	R45	19
C3	3	C24	3	CR18	12	R4	20	R25	20	R46	20
C4	4	C25	6	CR19	12	R5	21	R26	21	R47	21
C5	5	C26	8	CR20	12	R6	22	R27	24	R48	30
C6	3	C27	10	L1	13	R7	20	R28	20	R49	20
C7	6	C28	10	Q1	14	R8	23	R29	23	R50	23
C8	7	C29	11	Q2	14	R9	19	R30	19	R51	19
C9	8	C30	11	Q3	15	R10	18	R31	18	R52	19
C10	7	CR2	2	Q4	14	R11	19	R32	18	R53	19
C11	8	CR3	12	Q5	15	R12	20	R33	19	R54	31
C12	4	CR4	12	Q6	14	R13	21	R34	19	R55	26
C13	9	CR5	12	Q7	14	R14	24	R35	20	R56	32
C14	9	CR6	12	Q8	15	R15	23	R36	21	R57	33
C15	3	CR8	12	Q9	14	R16	20	R37	23	R58	34
C16	4	CR9	12	Q10	15	R17	19	R38	24	TP1	35
C17	4	CR10	12	Q11	14	R18	18	R39	20	TP2	36
C18	4	CR11	12	Q12	15	R19	19	R40	19	TP3	37
C19	5	CR12	12	Q13	14	R20	25	R41	29	TP4	38
C20	3	CR13	12	Q14	16	R21	26	R42	19	TP5	39
C21	6	CR14	12	R1	17	R22	27	R43	18	TP6	40

ELOWKO13

Figure 9. Printed Wiring Assembly (A6), Legend (Sheet 2 of 2).

SECTION II

TM 11-6625-1644-24P

(1) ILLUSTRATION		(2)	(3)	(4)	(5)	(6) DESCRIPTION	(7)	(8)
(a) FIG NO.	(b) ITEM NO.	SMR CODE	NATIONAL STOCK NUMBER	PART NUMBER	FSCM	USABLE ON CODE	U/M	QTY INC IN UNIT
GROUP 0206 PRINTED WIRING ASSEMBLY (A6)								
9	1	PAMZZ	5910-00-952-1549	CH05FD391J03	81349	CAPACITOR, FIXED, NICA	EA	1
v	2	PAMZZ	5910-00-114-0700	05P1103JS	12517	CAPACITOR, FIXED, PLASTIC	EA	1
9	3	PAMZZ	5910-00-044-4355	CH05ED470J03	81349	CAPACITOR, FIXED, NICA	EA	5
9	4	PAMZZ	5910-00-060-0868	CH05FD101J03	81349	CAPACITOR, FIXED, NICA	EA	6
9	5	PAMZZ	5910-00-456-0810	CH05FD910J03	81349	CAPACITOR, FIXED, NICA	EA	2
9	6	PAMZZ	5910-00-702-8057	CH05FD331J03	81349	CAPACITOR, FIXED, NICA	EA	2
9	7	PAMZZ	5910-00-007-2003	M26655-2-0098	81349	CAPACITOR, FIXED, TANTALUM	EA	2
9	8	PAMZZ	5910-00-144-4381	M26655-2-0274	81349	CAPACITOR, FIXED, TANTALUM	EA	4
9	9	PAMZZ	5910-00-022-5655	CH05FD361J03	81349	CAPACITOR, FIXED, NICA	EA	3
9	10	PAMZZ	5910-00-010-8718	CR06CW103K	81349	CAPACITOR, FIXED, CERAMIC	EA	2
9	11	PAMZZ	5910-00-836-4535	CH05ED270J03	81349	CAPACITOR, FIXED, NICA	EA	2
9	12	PAMZZ	5961-00-842-9864	1N914	81349	DIODE	EA	17
9	13	PAMZZ	5950-00-926-3145	RS18100-27	96906	COIL, RADIO FREQUENCY	EA	1
9	14	PAMZZ	5961-00-951-8757	2N2222A	61349	TRANSISTOR	EA	8
9	15	PAMZZ	5961-00-926-0135	2N2481	81349	TRANSISTOR	EA	5
9	16	PAMZZ	5961-00-911-6015	2N3251A	80131	TRANSISTOR	EA	1
9	17	PAMZZ	5905-00-141-1183	RC07GF101J	81349	RESISTOR, FIXED, COMPOSITION	EA	1
9	18	PAMZZ	5905-00-723-5251	RC07GF222J	81349	RESISTOR, FIXED, COMPOSITION	EA	6
9	19	PAMZZ	5905-00-686-9994	RC07GF122J	81349	RESISTOR, FIXED, COMPOSITION	EA	15
9	20	PAMZZ	5905-00-682-4105	RC07GF224J	81349	RESISTOR, FIXED, COMPOSITION	EA	10
9	21	PAMZZ	5905-00-726-4413	RC07GF129J	81349	RESISTOR, FIXED, COMPOSITION	EA	5
9	22	PAMZZ	5905-00-851-7165	RN60E5111F	81349	RESISTOR, FIXED, FILM	EA	1
9	23	PAMZZ	5905-00-689-6799	RT12C2P502	81349	RESISTOR, VARIABLE, WIRE WOUND	EA	5
9	24	PAMZZ	5905-00-851-7151	RN60E3161F	81349	RESISTOR, FIXED, FILM	EA	3
9	25	PAMZZ	5905-00-801-2377	RC07GF750J	81349	RESISTOR, FIXED, COMPOSITION	EA	1
9	26	PAMZZ	5905-00-727-8001	RC07GF661J	81349	RESISTOR, FIXED, COMPOSITION	EA	2
9	27	PAMZZ	5905-00-801-6444	RC07GF911J	81349	RESISTOR, FIXED, FILM	EA	1
9	28	PAMZZ	5905-00-119-3504	RC07GF273J	81349	RESISTOR, FIXED, COMPOSITION	EA	2
9	29	PAMZZ	5905-00-687-0002	RC07GF223J	81349	RESISTOR, FIXED, COMPOSITION	EA	1
9	30	PAMZZ	5905-00-061-2146	RN60E2101F	81349	RESISTOR, FIXED, FILM	EA	1
9	31	PAMZZ	5905-00-683-2247	RC07GF121J	81349	RESISTOR, FIXED, COMPOSITION	EA	1
9	32	PAMZZ	5905-00-755-0389	RC07GF220J	81349	RESISTOR, FIXED, COMPOSITION	EA	1
9	33	PAMZZ	5905-00-885-0201	RC07GF211J	81349	RESISTOR, FIXED, COMPOSITION	EA	1
9	34	PAMZZ	5905-00-885-0201	RC07GF2R7J	81349	RESISTOR, FIXED, COMPOSITION	EA	1
9	35	PAMZZ	5935-00-854-7465	3-582118-1	00779	JACK, TIP	EA	1
9	36	PAMZZ	5935-00-061-7744	3-582118-2	00779	JACK, TIP	EA	1
9	37	PAMZZ	5935-00-806-6134	3-582118-3	00779	JACK, TIP	EA	1
9	38	PAMZZ	5935-00-717-1351	3-582118-4	00779	JACK, TIP	EA	1
9	39	PAMZZ	5935-00-812-6415	3-582118-5	00779	JACK, TIP	EA	1

SECTION II

TM 11-6625-1644-24P

(1) ILLUSTRATION		(2)	(3)	(4)	(5)	(6)	(7)	(8)
(A) FIG NO.	(B) ITEM NO.	(C) SMR CODE	(D) PART NUMBER	(E) FSCM	(F) DESCRIPTION	(G) USABLE ON CODE	(H) U/M	(I) QTY INC IN UNIT
9	40	PAHZZ	3-582110-0	00779	JACK, TIP		EA	1
9	41	XDHZZ	SNC656576-3	80063	EJECTOR, CARD		EA	1

5935-00-964-3905

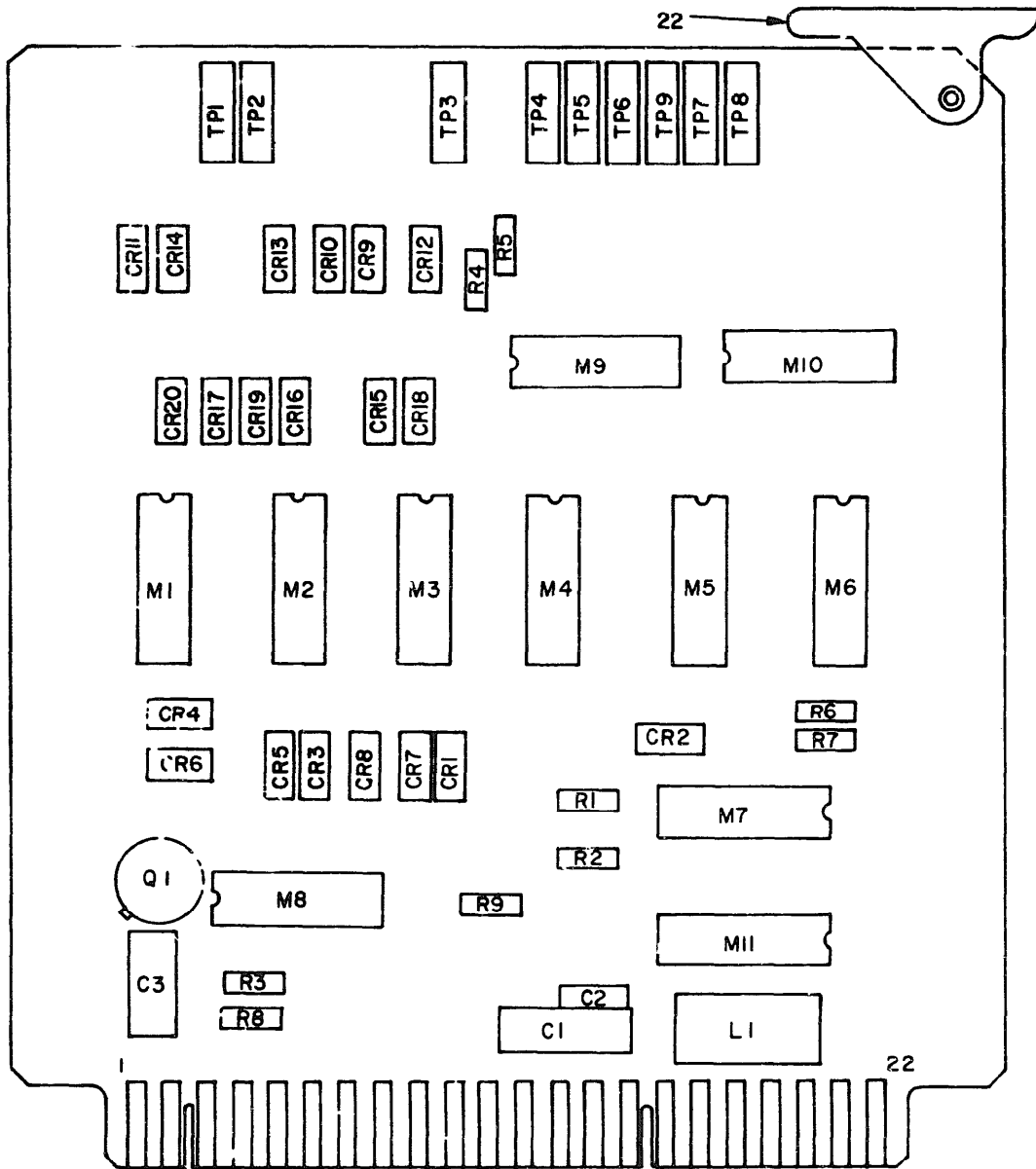


Figure 10. Printed Wiring Assembly (A7) (Sheet 1 of 2).

REF. DES.	ITEM NO.	REF. DES.	ITEM NO.	REF. DES.	ITEM NO.
CI	1	CR16	4	R1	10
C2	2	CR17	4	R2	10
C3	3	CR18	4	R3	10
CR1	4	CR19	4	R4	10
CR2	4	CR20	4	R5	10
CR3	4	L1	5	R6	10
CR4	4	M1	6	R7	10
CR5	4	M2	6	R8	11
CR6	4	M3	6	R9	12
CR7	4	M4	6	TP1	13
CR8	4	M5	6	TP2	14
CR9	4	M6	6	TP3	15
CR10	4	M7	7	TP4	16
CR11	4	M8	7	TP5	17
CR12	4	M9	7	TP6	18
CR13	4	M10	7	TP7	19
CR14	4	M11	8	TP8	20
CR15	4	Q1	9	TP9	21

ELOWK015

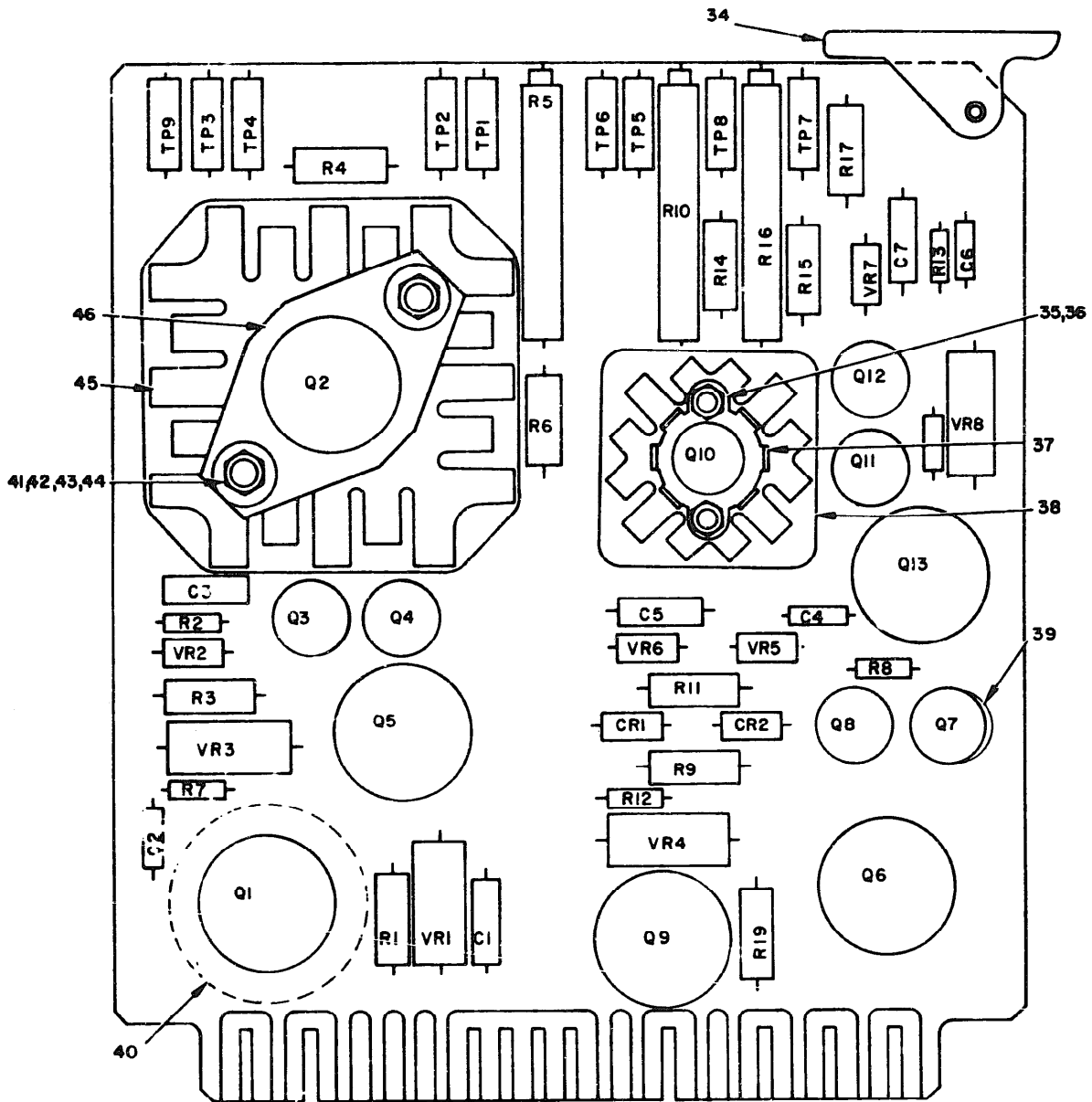
Figure 10. Printed Wiring Assembly (A7), Legend (Sheet 2 of 2).



## SECTION II

TM 11-6625-1644-24P

(1) ILLUSTRATION		(2)	(3)	(4)	(5)	(6) DESCRIPTION	(7)	(8)
(a) FIG NO.	(b) ITEM NO.	SMR CODE	NATIONAL STOCK NUMBER	PART NUMBER	FSCM	USABLE ON CODE	U/M	QTY INC IN UMBT
GROUP 0207 PRINTED WIRING ASSEMBLY (A7)								
10	1	PAHZZ	5910-00-007-2003	M26655-2-0098	81349	CAPACITOR, FIXED, TANTALUM	EA	1
10	2	PAHZZ	5910-00-010-8717	CK06CW103K	81349	CAPACITOR, FIXED, CERAMIC	EA	1
10	3	PAHZZ	5910-00-836-4535	CM05E0270J03	81349	CAPACITOR, FIXED, MICA	EA	1
10	4	PAHZZ	5961-00-842-9864	1N914	80131	DIODE	EA	20
10	5	PAHZZ	5950-00-926-3145	MS18100-27	96906	COIL, RADIO FREQUENCY	EA	1
10	6	PAHZZ	5962-00-878-8567	M1C945-1D	14433	INTEGRATED CIRCUIT	EA	6
10	7	PAHZZ	5962-00-878-8853	M1C930-1D	14433	INTEGRATED CIRCUIT	EA	4
10	8	PAHZZ	5962-00-878-8854	M1C946-1D	14433	INTEGRATED CIRCUIT	EA	1
10	9	PAHZZ	5961-00-951-8757	2N2222A	81349	TRANSISTOR	EA	1
10	10	PAHZZ	5905-00686-3369	RC07GF331J	81349	RESISTOR, FIXED, COMPOSITION	EA	7
10	11	PAHZZ	5905-00-726-4413	RC07GF123J	81349	RESISTOR, FIXED, COMPOSITION	EA	1
10	12	PAHZZ	5905-00-120-9154	RC07GF471J	81349	RESISTOR, FIXED, COMPOSITION	EA	1
10	13	PAHZZ	5935-00-854-7465	3-582118-1	00779	JACK, TIP	EA	1
10	14	PAHZZ	5935-00-061-7744	3-582118-2	00779	JACK, TIP	EA	1
10	15	PAHZZ	5935-00-808-6134	3-582118-3	00779	JACK, TIP	EA	1
10	16	PAHZZ	5935-00-717-1351	3-582118-4	00779	JACK, TIP	EA	1
10	17	PAHZZ	5935-00-812-6415	3-582118-5	00779	JACK, TIP	EA	1
10	18	PAHZZ	5935-00-898-7228	3-582118-6	00779	JACK, TIP	EA	1
10	19	PAHZZ	5935-00-089-2376	3-582118-7	00779	JACK, TIP	EA	1
10	20	PAHZZ	5935-00-717-1335	3-582118-8	00779	JACK, TIP	EA	1
10	21	PAHZZ	5935-00-964-3905	3-582118-0	00779	JACK, TIP	EA	1
10	22	XDHZZ		SMC656576-7	80063	EJECTOR, CARD	EA	1



NOTE: PREFIX ALL REFERENCE DESIGNATIONS WITH A8.

ELOWK016

Figure 11. Printed Wiring Assembly (A8) (Sheet 1 of 2).

REF.	ITEM	REF.	ITEM	REF.	ITEM
C1	1	Q12	7	R19	10
C2	2	Q13	4	TP1	20
C3	1	R1	8	TP2	21
C4	2	R2	9	TP3	22
C5	1	R3	10	TP4	23
C6	2	R4	11	TP5	24
C7	1	R5	12	TP6	25
CR1	3	R6	13	TP7	26
CR2	3	R7	14	TP8	27
Q1	4	R8	15	TP9	28
Q2	4	R9	16	VR1	29
Q3	5	R10	17	VR2	30
Q4	5	R11	18	VR3	31
Q5	4	R12	19	VR4	32
Q6	4	R13	9	VR5	30
Q7	5	R14	10	VR6	33
Q8	5	R15	11	VR7	30
Q9	4	R16	12	VR8	31
Q10	6	R17	13		
Q11	7	R18	14		

ELOWKO17

Figure 11. Printed Wiring Assembly (A8), Legend (Sheet 2 of 2).

## SECTION II

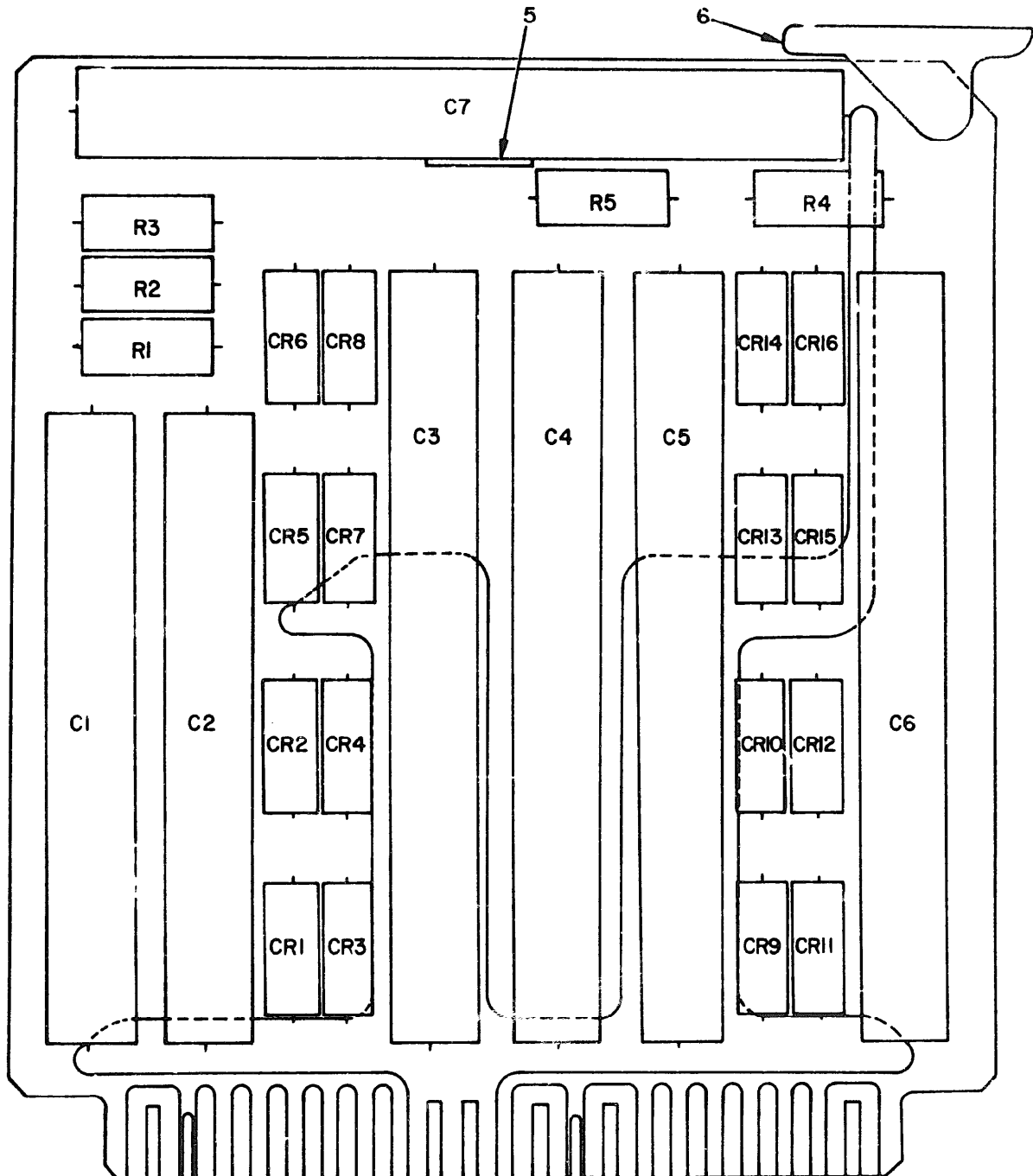
TM 11-6625-1644-24P

(1) ILLUSTRATION		(2)	(3)	(4)	(5)	(6)	(7)	(8)
(a) FIG NO.	(b) ITEM NO.	SMR CODE	NATIONAL STOCK NUMBER	PART NUMBER	FSCM	DESCRIPTION	U/M	QTY INC IN UNIT
						USABLE ON CODE		
GROUP 0208 PRINTED WIRING ASSEMBLY (A8)								
11	1	PAHZZ	5910-00-787-2109	M26655-2-0144	81349	CAPACITOR, FIXED, TANTALUM	EA	4
11	2	PAHZZ	5910-00-061-8235	CK09CM561K	81349	CAPACITOR, FIXED, CERAMIC	EA	3
11	3	PAHZZ	5961-00-842-9864	1N914	80131	DIODE	EA	2
11	4	PAHZZ	5961-00-081-4816	2N1485	80131	TRANSISTOR	EA	6
11	5	PAHZZ	5961-00-951-8757	2N2222A	81349	TRANSISTOR	EA	4
11	6	PAHZZ	5961-00-949-1440	2N2905	80131	TRANSISTOR	EA	1
11	7	PAHZZ	5961-00-911-6015	2N3251A	81349	TRANSISTOR	EA	2
11	8	PAHZZ	5905-00-111-4738	RC206F152J	81349	RESISTOR, FIXED, COMPOSITION	EA	1
11	9	PAHZZ	5905-00-681-996	RC07GF332J	81349	RESISTOR, FIXED, COMPOSITION	EA	2
11	10	PAHZZ	5905-00-061-2127	RN60E7500F	81349	RESISTOR, FIXED, FILM	EA	3
11	11	PAHZZ	5905-00-061-2146	RN60E2101F	81349	RESISTOR, FIXED, FILM	EA	2
11	12	PAHZZ	5905-00-043-0251	RT12C2P501	81349	RESISTOR, VARIABLE WIRE WOUND	EA	2
11	13	PAHZZ	5905-00-087-1290	RN60E3011F	81349	RESISTOR, FIXED, FILM	EA	2
11	14	PAHZZ	5905-00-105-7768	RC07GF561J	81349	RESISTOR, FIXED, COMPOSITION	EA	2
11	15	PAHZZ	5905-00-681-8818	RC07GF153J	81349	RESISTOR, FIXED, COMPOSITION	EA	1
11	16	PAHZZ	5905-00-851-7151	RN60E3161F	81349	RESISTOR, FIXED, FILM	EA	1
11	17	PAHZZ	5905-00-717-5884	RT12C2P102	81349	RESISTOR, VARIABLE	EA	1
11	18	PAHZZ	5905-00-851-7165	RN60E5111F	81349	RESISTOR, FIXED, FILM	EA	1
11	19	PAHZZ	5905-00-683-2240	RC07GF221J	81349	RESISTOR, FIXED, COMPOSITION	EA	1
11	20	PAHZZ	5935-00-854-7465	3-582118-1	00779	JACK, TIP	EA	1
11	21	PAHZZ	5935-00-061-7744	3-582118-2	00779	JACK, TIP	EA	1
11	22	PAHZZ	5935-00-808-6134	3-582118-3	00779	JACK, TIP	EA	1
11	23	PAHZZ	5935-00-717-1351	3-582118-4	00779	JACK, TIP	EA	1
11	24	PAHZZ	5935-00-812-6415	3-582118-5	00779	JACK, TIP	EA	1
11	25	PAHZZ	5935-00-898-7228	3-582118-6	00779	JACK, TIP	EA	1
11	26	PAHZZ	5935-00-089-2376	3-582118-7	00779	JACK, TIP	EA	1
11	27	PAHZZ	5935-00-717-1335	3-582118-8	00779	JACK, TIP	EA	1
11	28	PAHZZ	5935-00-964-3905	3-582118-0	00779	JACK, TIP	EA	1
11	29	PAHZZ	5961-00-847-5241	1N30318	80131	SEMICONDUCTOR DEVICE, DIODE	EA	1
11	30	PAHZZ	5961-00-752-6121	1N753A	81349	DIODE	EA	3
11	31	PAHZZ	5961-00-847-5508	1N30248	81349	DIODE	EA	2
11	32	PAHZZ	5961-00-068-0687	1N3828A	81349	DIODE	EA	1
11	33	PAHZZ	5961-00-930-2765	1N748A	01295	SEMICONDUCTOR DEVICE, DIODE	EA	1
11	34	XDHZZ		SMC656576-8	80063	EJECTOR, CARD	EA	1
11	35	PAHZZ	5310-00-550-5009	MS15795-704	96906	WASHER, FLAT	EA	4
11	36	PAHZZ	5310-00-928-2690	MS35338-134	96906	WASHER, LOCK	EA	2
11	37	PAHZZ	5999-00-126-1865	LC5A18	98978	CLAMP, HEAT DISSIPATOR	EA	1
11	38	PAHZZ	5999-00-982-7921	UP1T088	98978	DISSIPATOR, HEAT	EA	1
11	39	PAHZZ	5999-00-021-8877	A10104	07147	INSULATOR, STANDOFF	EA	5

## SECTION II

TM 11-6625-1644-24P

(1) ILLUSTRATION		(2)	(3)	(4)	(5)	(6)	(7)	(8)
(a) FIG NO	(b) ITEM NO	SMR CODE	NATIONAL STOCK NUMBER	PART NUMBER	FSCM	DESCRIPTION  USABLE ON CODE	U/M	QTY INC IN UNIT
11	40	PAHZZ	5999-00-944-3625	213	05820	DISSIPATOR,HEAT	EA	2
11	41	PAHZZ	5305-00-054-5639	MS1957-5	96906	SCREW,MACHINE	EA	2
11	42	PAHZZ	5310-00-913-8880	MS1515M02L	80205	WASHER,NONMETALLIC	EA	2
11	43	PAHZZ	5310-00-721-3674	MS15795-702	96906	WASHER,FLAT	EA	2
11	44	PAHZZ	5310-00-938-2013	MS35649-224	96906	NUT,PLAIN,HEXAGON	EA	2
11	45	PAHZZ	5999-00-026-1864	L85A1B	98978	DISSIPATOR,HEAT	EA	1
11	46	PAHZZ	5961-00-852-2269	UPC48	98978	RETAINER,TRANSISTOR	EA	1



NOTE: PREFIX ALL REFERENCE DESIGNATIONS WITH A9.

ELOWKO18

Figure 12. Printed Wiring Assembly (A9) (Sheet 1 of 2).

REF. DES.	ITEM NO.	REF. DES.	ITEM NO.	REF. DES.	ITEM NO.	REF. DES.	ITEM NO.
C1	1	CR1	3	CR8	3	CR15	3
C2	1	CR2	3	CR9	3	CR16	3
C3	2	CR3	3	CR10	3	R1	4
C4	2	CR4	3	CR11	3	R2	4
C5	2	CR5	3	CR12	3	R3	4
C6	2	CR6	3	CR13	3	R4	4
C7	2	CR7	3	CR14	3	R5	4

ELOWK019

Figure 12. Printed Wiring Assembly (A9), Legend (Sheet 2 of 2).

## SECTION II

TM 11-6625-1644-24P

(1) ILLUSTRATION		(2)	(3)	(4)	(5)	(6)	(7)	(8)
(a) FIG NO.	(b) ITEM NO.	SMR CODE	NATIONAL STOCK NUMBER	PART NUMBER	FBCM	DESCRIPTION	USABLE ON CODE	QTY INC IN UNIT
GROUP 0209 PRINTED WIRING ASSEMBLY (A9)								
12	1	XDRZZ		CL25BL700TP3	81349	CAPACITOR, FIXED, TANTALUM		EA 2
12	2	PAHZZ	5910-00-175-4635	CL25BR301UP3	81349	CAPACITOR, FIXED, ELEC		EA 5
12	3	PAHZZ	5961-00-957-6865	1M3189	81349	SEMICONDUCTOR DEVICE, DIODE		EA 16
12	4	PAHZZ	5905-00-101-7892	RC32GF3R3J	80131	RESISTOR, FIXED, COMPOSITION		EA 5
12	5	PAHZZ	5340-00-990-6408	MS28136-5	96906	CLIP, SPRING TENSION		EA 7
12	6	XDHZZ		SMC656576-9	80063	EJECTOR, CARD		EA 1



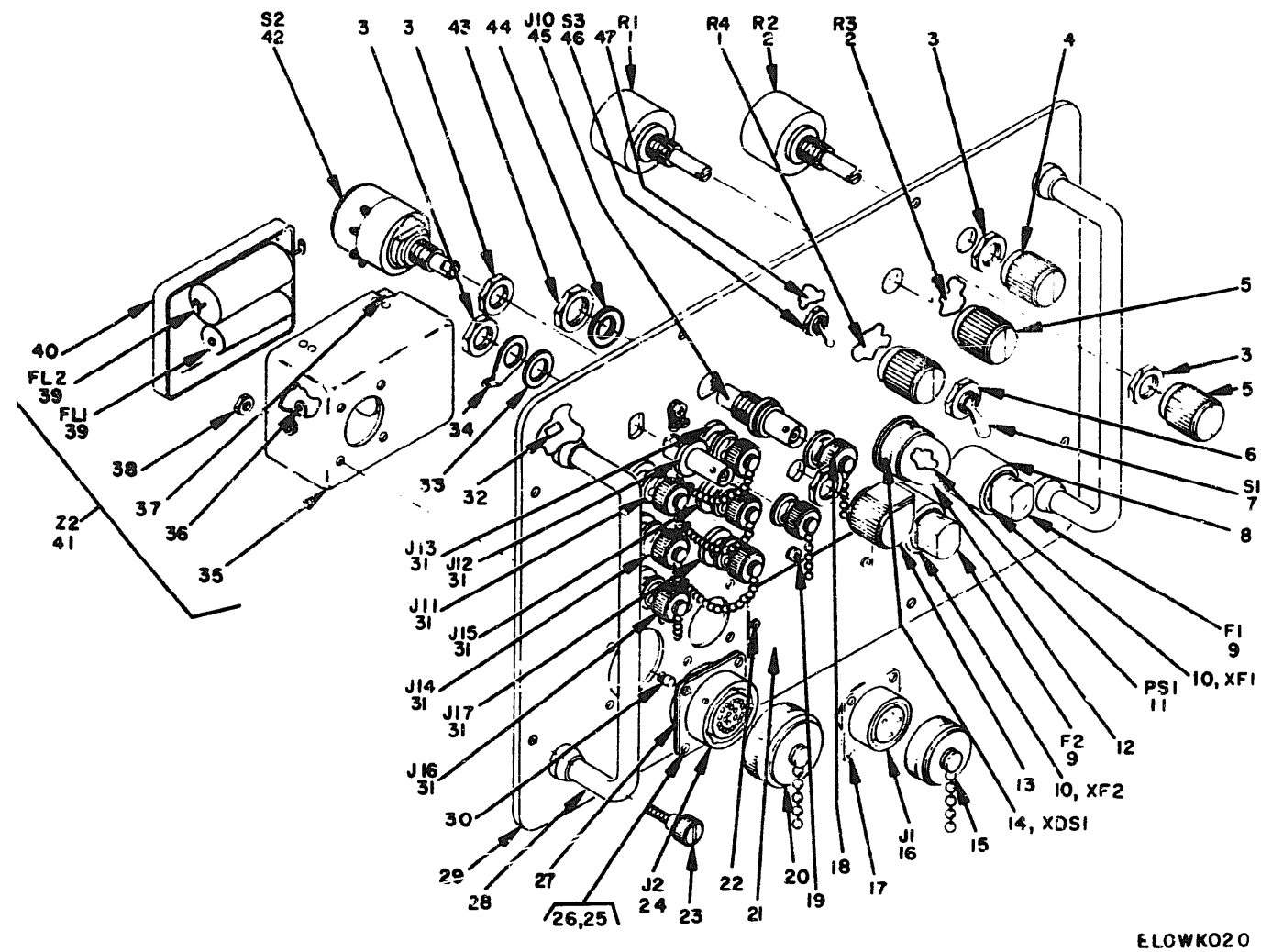


Figure 13. Control Panel Assembly.

## SECTION II

TM 11-6625-1644-24P

(1) ILLUSTRATION		(2)	(3)	(4)	(5)	(6) DESCRIPTION	(7) QTY IN UNIT	(8) QTY IN UNIT
(a) FIG NO.	(b) ITEM NO.	SMR CODE	NATIONAL STOCK NUMBER	PART NUMBER	FSCM	USABLE ON CODE	U/M	Unit
GROUP 0210 CONTROL PANEL ASSEMBLY								
13	1	PAHZZ	5905-00-577-7129	RV4SAYS0252A	81349	RESISTOR,VARIABLE	EA	2
13	2	PAHZZ	5905-00-539-2573	RV4SAYS0502A	81349	RESISTOR,VARIABLE	EA	2
13	3	XDHZZ		F22NKT40	72962	NUT,PLAIN,CAP	EA	4
13	4	PAOZZ	5355-00-954-3435	MS91520-1E20	96906	KNOB,CONTROL	EA	1
13	5	PAOZZ	5355-00-556-0151	MS91520-1020	96906	KNOB,CONTROL	EA	2
13	6	PAHZZ	5330-00-306-8769	MS25190-1	96906	SEAL,BUSHING	EA	1
13	7	PAHZZ	5930-00-655-1575	MS39059-22	96906	SWITCH,TOGGLE	EA	1
13	8	PAHZZ	5305-00-780-8455	MS24693C73	96906	SCREW,MACHINE	EA	4
13	9	PAOZZ	5920-00-281-0224	F02A250V1-2A5	81349	FUSE,CARTRIDGE	EA	2
13	10	PAHZZ	5920-00-089-4130	FHL17G1	81349	FUSEHOLDER	EA	2
13	11	XDOZZ		NE51	81349	LAMP,INDICATOR	EA	1
13	12	XDOZZ		LC19A1	81349	LENS,INDICATOR	EA	1
13	13	PAOZZ	5355-00-616-9604	MS91520-1P20	96906	KNOB,CONTROL	EA	1
13	14	PAHZZ	6210-00-840-1057	LH77-1	81349	HOUSING,INDICATOR LIGHT	EA	1
13	15	PAOZZ	5935-00-899-9361	MS3101-14C	96906	CAP,PROTECTIVE	EA	1
13	16	PAHZZ	5936-00-850-6522	MS3112E14-5P	96906	CONNECTOR,RECEPTACLE,ELECTRIC	EA	1
13	17	XDHZZ		10-450-145	77820	SEAL,CONNECTOR,RADIO FREQUENCY	EA	1
13	18	PAOZZ	5935-00-885-2264	MS35106-123A	96906	CAP,PROTECTIVE	EA	8
13	19	XDHZZ		R4-40-3-B	97539	SCREW,SEAL	EA	1
13	20	PAOZZ	5935-00-089-1145	MS3101-10C	96906	CAP,PROTECTIVE	EA	1
13	21	XDHZZ		SMC656693	80063	PLATE,IDENTIFICATION	EA	1
13	22	PAHZZ	5305-00-054-5646	MS51957-12	96906	SCREW,MACHINE	EA	2
13	23	PAHZZ	5305-00-112-9456	07500-804	17419	FASTENER,TURNLOCK	EA	8
13	24	PAHZZ	5935-00-825-8864	MS3112E10-32S	96906	CONNECTOR,RECEPTACLE,ELECTRIC	EA	1
13	25	PAHZZ	5305-00-054-5648	MS51957-14	96906	SCREW,MACHINE	EA	10
13	26	PAHZZ	5330-00-947-4271	NAS1598C3Y	80205	WASHER,SEALING	EA	4
13	27	XDHZZ		10-450-185	77820	SEAL,CONNECTOR,RADIO FREQUENCY	EA	1
13	28	PAHZZ	5340-00-814-6698	1062-30	88245	HANDLE,BOM	EA	2
13	29	XDHZZ		SMC656597	80063	PANEL,MARKING	EA	1
13	30	XDHZZ	6625-00-274-0115	SMC656699	80063	ADAPTER,CABLE	EA	1
13	31	PAHZZ	5935-00-892-9035	UG657U	81349	CONNECTOR,RECEPTACLE,ELECTRIC	EA	7
13	32	PAHZZ	5340-00-976-4123	901-30	88245	FERRULE	EA	4
13	33	PAHZZ	5310-00-939-1074	NAS1515H04L	80205	WASHER,NYLON	EA	4
13	34	PAHZZ	5940-00-058-4544	639	79963	TERMINAL,LUG	EA	1
13	35	XDHZZ		232-488	98376	BOX,FILTER	EA	1
13	36	XDHZZ		333	79963	TERMINAL,LUG	EA	1
13	37	XDHZZ		22LMA27H22-40	72962	NUT,ANCHOR	EA	4
13	38	PAHZZ	5310-00-792-1704	NF7201-04	15653	NUT,STAKE	EA	5
13	39	PAHZZ	5915-00-113-2640	ZJX51A16	86289	FILTER,RADIO FREQUENCY,INTERFERENCE	EA	2

## SECTION II

TM 11-6625-1644-24P

(1) ILLUSTRATION		(2)	(3)	(4)	(5)	(6)	(7)	(8)
(A) FIG NO.	(B) ITEM NO.	SMR CODE	NATIONAL STOCK NUMBER	PART NUMBER	FSCM	DESCRIPTION	U/M	QTY INC IN UNIT
						USABLE ON CODE		
13	40	XDHZZ		Z32-48COT	98376	COVER,RADIO FREQUENCY,INTERFERENCE FILTER		
13	41	XDHHH		SMD656635	80063	FILTER ASSEMBLY		
13	42	PAHZZ	5930-00-113-7582	1905M1-8WP	9181Z	SWITCH,ROTARY		
13	43	PAHZZ	5310-00-934-9748	MS35649-244	96906	NUT,PLAIN,HEXAGON		
13	44	PAHZZ	5310-00-057-0573	MS620C4	80205	WASHER,FLAT		
13	45	PAHZZ	5935-00-823-0308	MS35177-492D	96906	ADAPTER,CONNECTOR		
13	46	PAHZZ	5930-00-225-7111	MS24655-231	96906	SWITCH,TOGGLE		
13	47	XDHZZ		R4-40-1-2	97539	SCREW,SEAL		

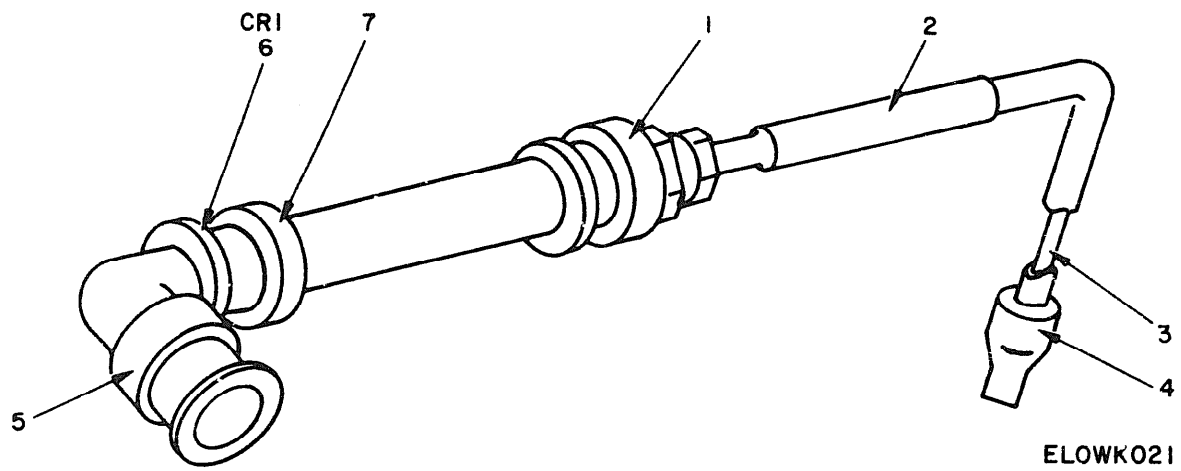
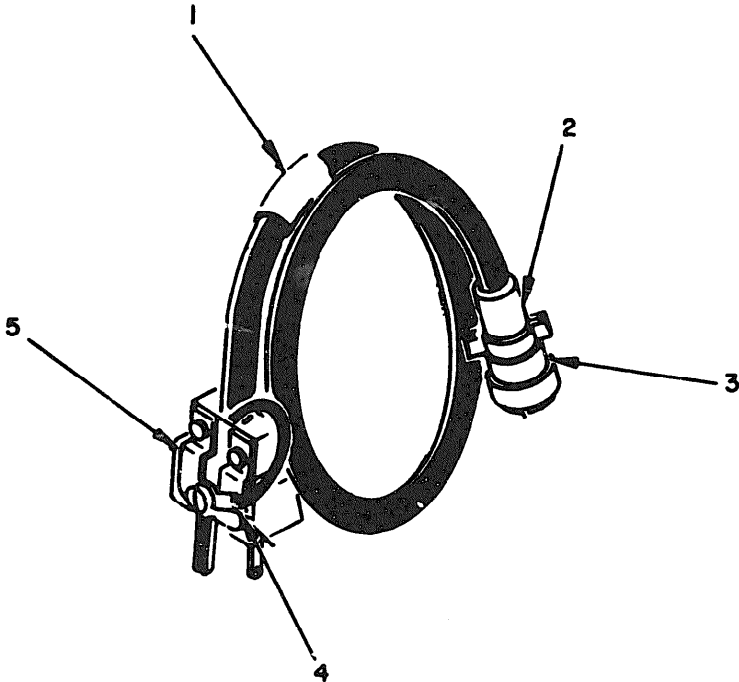


Figure 14. Cable Assembly (WI).

## SECTION II

TM 11-6625-1644-24P

(1) ILLUSTRATION		(2)	(3)	(4)	(5)	(6) DESCRIPTION	(7)	(8)
(a) FIG NO.	(b) ITEM NO.	SMR CODE	NATIONAL STOCK NUMBER	PART NUMBER	FSCM	USABLE ON CODE	U/M	QTY INC IN UNIT
GROUP 0211 CABLE ASSEMBLY (W1)								
14	1	PAHZZ	5935-00-085-7530	58-007-000	98291	CONNECTOR, PLUG, ELECTRICAL	EA	1
14	2	XDHZZ		SNC568596-1	80063	BAND, IDENTIFICATION	EA	1
14	3	PAHZZ	5940-00-812-1668	MS21981-063	96906	FERRULE, INNER	EA	1
14	4	PAHZZ	5940-00-800-7224	MS18121-128	96906	FERRULE, OUTER	EA	1
14	5	PAHZZ	5935-00-847-2600	NS35368-3068	96906	ADAPTER, CONNECTOR	EA	1
14	6	PAHZZ	5961-00-615-5550	1N24NE	81349	DIODE	EA	1
14	7	XDHZZ		XAA80	00929	HOLDER, DETECTOR	EA	1



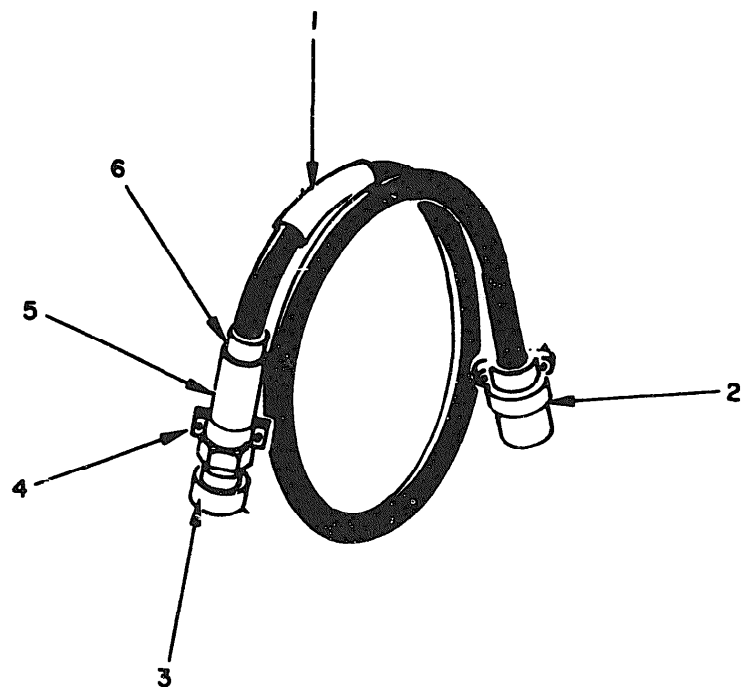
ELOWK022

Figure 15. Cable Assembly, Electrical Power CX-11719/APM.

SECTION II

TM 11-6625-1644-24P

(1) ILLUSTRATION		(2)	(3)	(4)	(5)	(6)	(7)	(8)
(a) FIG NO.	(b) ITEM NO.	SMP CODE	NATIONAL STOCK NUMBER	PART NUMBER	FSCM	DESCRIPTION	USABLE ON CODE	QTY INC IN UNIT
						GROUP 03 CABLE ASSEMBLY, ELECTRICAL POWER CX-11719/APM OR CX-11629/APM-123 OR CX-11626/APM-123(V) OR CX-11628/APM-123		
15	1	XDHZZ		SNC568596-3	80063	BAND, IDENTIFICATION		EA 1
15	2	PAHZZ	53695-00-820-4535	MS3420-6	96906	BUSHING, CABLE		EA 1
15	3	PAHZZ	5935-00-481-8765	MS3116F14-5S	96906	CONNECTOR, PLUG, ELECTRICAL		EA 1
15	4	PAHZZ	5940-00-204-8966	35216	09769	TERMINAL, SLOT		EA 2
15	5	PAHZZ	5935-00-931-7490	UP221M	81349	CONNECTOR, PLUG, ELECTRICAL		EA 1



ELOWK023

Figure 16. Cable Assembly, Electrical Power CX-11626/123(V).



## SECTION II

TM 11-6625-1644-24P

(1) ILLUSTRATION		(2) SBR CODE	(3) NATIONAL STOCK NUMBER	(4) PART NUMBER	(5) PSCM	(6) DESCRIPTION  USABLE ON CODE	(7) U/M	(8) QTY INC IN UNIT
(a) FIG NO.	(b) ITEM NO.							
16	1	KDMZZ		SNC568596-3	80063	BAND, IDENTIFICATION	EA	1
16	2	YDRZZ		D41	81349	CONNECTOR, PLUG, ELECTRICAL	EA	1
16	3	PAMZZ	5935-00*199-2657	MS3106A10-9P	96906	CONNECTOR, PLUG, ELECTRICAL	EA	1
16	4	PAMZZ	5935-00-809-0786	MS3057-10A	96906	CLAMP, ELECTRICAL	EA	1
16	5	PAMZZ	5935-936-7377	MS3420-8	96906	BUSHING, CABLE	EA	1
16	6	PAMZZ	5365-00-820-4535	MS3420-6	96906	BUSHING, CABLE	EA	1

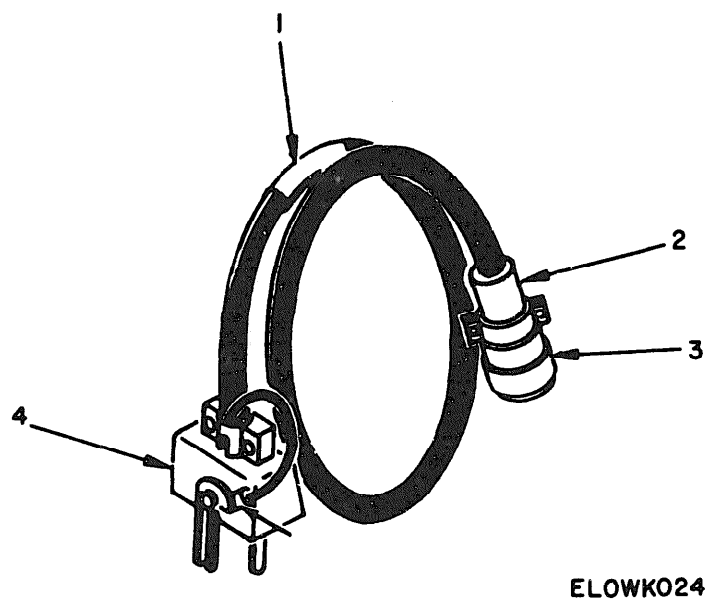
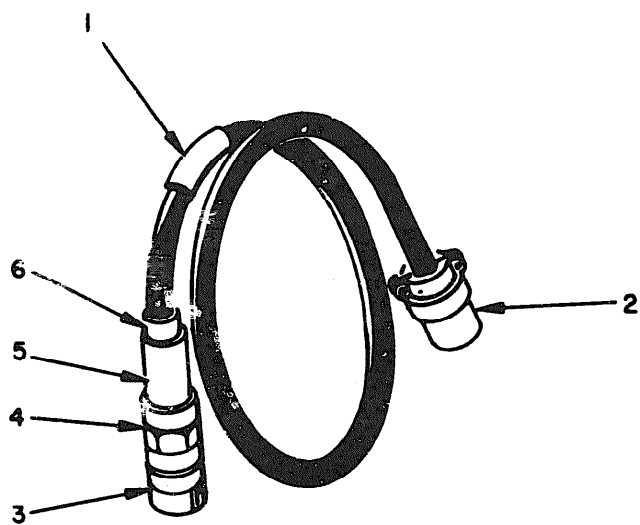


Figure 17. Cable Assembly, Electrical Power CX-11628/APM-123.

## SECTION II

TM 11-6625-1644-24P

(1) ILLUSTRATION		(2)	(3)	(4)	(5)	(6)	(7)	(8)
(a) FIG NO.	(b) ITEM NO.	SMR CODE	NATIONAL STOCK NUMBER	PART NUMBER	FSCM	DESCRIPTION	USABLE ON CODE	QTY INC IN UNIT
17	1	XDHZZ		SMC568996-3	80063	BAND, IDENTIFICATION		EA 1
17	2	PAHZZ	5365-00-820-4535	MS3420-6	96906	BUSHING, CABLE		EA 1
17	3	PAHZZ	5935-00-781-8765	MS3116P14-5S	96906	CONNECTOR, PLUG OR		EA 1
17	4	PAHZZ	5935-00-843-7362	UP131M	81349	CONNECTOR, PLUG, ELECTRICAL		EA 1



ELOWK025

Figure 18. Cable Assembly, Electrical Power CX-11629/APM-123.

## SECTION II

TM 11-6625-1644-24P

(1) ILLUSTRATION		(2)	(3)	(4)	(5)	(6)	(7)	(8)
(a) FIG NO.	(b) ITEM NO.	SMR CODE	NATIONAL STOCK NUMBER	PART NUMBER	FSCM	DESCRIPTION  USABLE ON CODE	U/M	QTY INC IN UNIT
10	1	XDHZZ		SMC568596-3	80063	BAND, IDENTIFICATION	EA	1
10	2	XDHZZ		D41	81349	CONNECTOR, PLUG, ELECTRICAL	EA	1
10	3	PAHZZ	5935-00-899-6869	MS307A20-4P	96906	CONNECTOR, PLUG, ELECTRICAL	EA	1
10	4	XDHZZ	5935-00-223-0572	MS3057-12A	96906	CLAMP, ELECTRICAL	EA	1
10	5	PAHZZ	5935-00-936-7377	MS3420-8	96906	BUSHING, CABLE	EA	1
10	6	PAHZZ	5365-00-820-4535	MS3420-6	96906	BUSHING, CABLE	EA	1

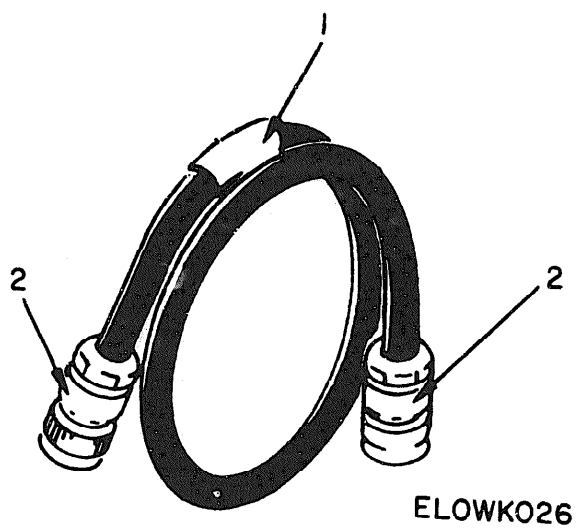


Figure 19. Cable Assembly CG-3504/U.

SECTION II

TM 11-6625-1644-24P

(1) ILLUSTRATION		(2)	(3)	(4)	(5)	(6)	(7)	(8)
(a) FIG NO.	(b) ITEM NO.	SMR CODE	NATIONAL STOCK NUMBER	PART NUMBER	FSCM	DESCRIPTION	USABLE ON CODE	QTY INC IN UNIT
						GROUP 04 CABLE ASSEMBLY CG-3501/U		
19	1	KDHZZ		SNC548592-2	80063	BAND, IDENTIFICATION		EA 1
19	2	PAHZZ	5935-00-850-9157	NS35170-260E	76906	CONNECTOR, PLUG, ELECTRICAL		EA 2

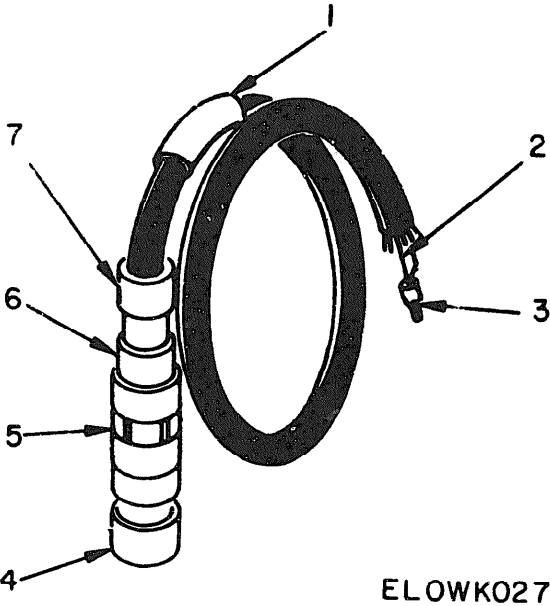


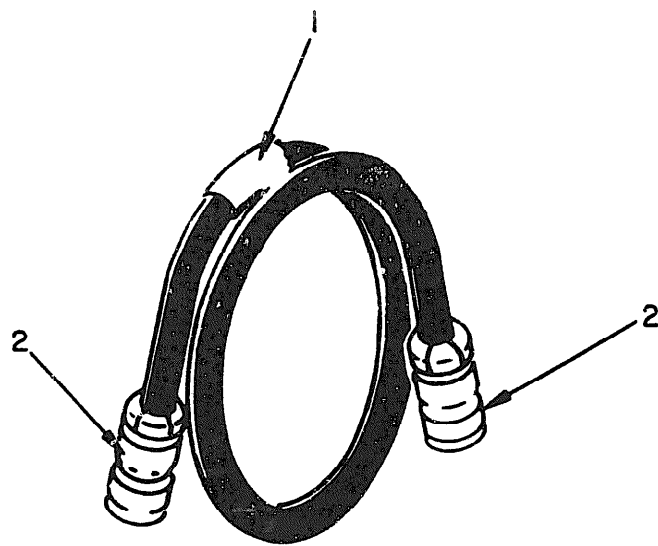
Figure 20. Cable Assembly CX-11722/APM-270(V).



## SECTION II

TM 11-6625-1644-24P

(1) ILLUSTRATION		(2)	(3)	(4)	(5)	(6)	(7)	(8)
(a) FIG NO.	(b) ITEM NO.	SMN CODE	NATIONAL STOCK NUMBER	PART NUMBER	FSCM	DESCRIPTION	USABLE ON CODE	QTY INC IN UNIT
						GROUP 05 CABLE ASSEMBLY CX-11722/APM-270(V)		
20	1	XDHZZ		SMC656704-2	80063	BAND, IDENTIFICATION		EA 1
20	2	PAHZZ	5940-00-812-1668	MS21581-063	96906	FERRULE, INNER		EA 9
20	3	PAHZZ	5940-00-808-7224	MS18121-128	96906	FERRULE, OUTER		EA 1
20	4	PAHZZ	5935-00-827-4019	MS3116E18-32P	96906	CONNECTOR, PLUG, ELECTRICAL		EA 2
20	5	XDHZZ		G1519A181082P	06324	CLAMP, RADIO, FREQUENCY		EA 2
20	6	PAHZZ	5935-00-936-7376	MS3420-10	96906	BUSHING, CABLE		EA 2
20	7	XDHZZ		SMC656704-1	80063	BAND, IDENTIFICATION		EA 2



ELOWK028

Figure 21. Cable Assembly CG-409H-U.

SECTION II

TM 11-6625-1644-24P

(1) ILLUSTRATION		(2)	(3)	(4)	(5)	(6)	(7)	(8)	
(a) FIG NO.	(b) ITEM NO.	SMR CODE	NATIONAL STOCK NUMBER	PART NUMBER	FBCM	DESCRIPTION	USABLE ON CODE	U/M	QTY INC IN UNIT
						GROUP 06 CABLE ASSEMBLY CG-409H/U			
21	1	XDHZZ		SMC568556-2	80053	BAND, IDENTIFICATION		EA	1
21	2	PAHZZ	5935-00-823-0487	M535168-85E	96906	CONNECTOR, PLUG, ELECTRICAL		EA	2

## SECTION IV

## NATIONAL STOCK NUMBER AND PART NUMBER INDEX

TM 11-6625-1644-24P

NOTE: LATEST NATIONAL STOCK NUMBER AND PART NUMBER ASSIGNMENTS ARE INCLUDED AT END OF INDEX.

STOCK NUMBER	FIGURE NO.	ITEM NO.	STOCK NUMBER	FIGURE NO.	ITEM NO.
5340-00-008-2108	3	12	5319-00-595-6211	3	16
5999-00-021-8877	11	39	5310-00-595-6211	4	8
5905-00-043-0251	8	41	5355-00-616-9604	13	13
5905-00-043-0251	11	12	5930-00-655-1575	13	7
5940-00-050-2308	5	19	3905-00-681-6462	8	38
5305-00-054-5639	11	41	5905-00-681-8818	7	31
5305-00-054-5646	13	22	5905-00-681-8818	8	34
5305-00-054-5648	13	25	5905-00-681-8818	11	15
5305-00-054-5649	2	17	5905-00-681-8819	6	34
5305-00-054-5649	3	14	5905-00-601-9969	11	9
5305-00-054-6651	2	8	5905-00-682-4105	7	21
5305-00-054-6653	5	23	5905-00-682-4105	8	28
5310-00-057-0573	13	44	5905-00-682-4105	9	20
5940-00-058-4544	13	34	5905-00-683-2233	7	33
5905-00-061-2127	11	10	5905-00-683-2233	8	36
5905-00-061-2136	7	29	5905-00-683-2236	6	23
5905-00-061-2146	9	30	5905-00-683-2240	6	20
5905-00-061-2146	11	11	5905-00-683-2240	7	35
5935-00-061-7744	6	36	5905-00-683-2240	11	19
4935-00-061-7744	7	40	5905-00-683-2246	6	30
5935-00-061-7744	9	36	5905-00-683-2246	7	32
5935-00-061-1744	10	14	5905-00-683-2246	8	24
5935-00-061-7744	11	21	5905-00-683-2247	6	27
5910-00-061-8235	11	2	5905-00-683-2247	9	31
5305-00-066-7326	2	9	5905-00-683-7723	6	19
5305-00-066-7328	5	17	5905-00-686-3369	10	10
59990-00-068-0666	5	28	5905-00-686-3370	8	39
5999-00-068-0669	5	7	5905-00-686-9994	6	33
5905-00-087-1290	11	13	5905-00-686-9994	7	20
5905-00-088-0650	7	22	5905-00-686-9994	8	22
5935-00-089-1145	13	20	5905-00-686-9994	9	19
5935-00-089-2376	10	19	5905-00-686-9996	6	24
5935-00-089-2376	11	26	5905-00-686-9996	8	42
5920-00-089-4130	13	10	5905-00-686-9997	6	31
5905-00-101-7892	12	4	5905-00-686-9997	8	23
6625-00-105-8334	3	20	5905-00-686-9998	6	32
6625-00-105-8335	3	21	5905-00-687-0002	9	29
6625-00-105-8336	3	22	5905-00-688-3738	8	33
6625-00-105-8337	3	23	5905-00-689-6799	7	24
6625-00-105-8338	3	24	5905-00-689-6799	8	46
6625-00-105-8339	3	28	5905-00-689-6799	9	23
6625-00-105-8340	3	29	5905-00-689-9608	6	28
5305-00-112-9456	13	23	5905-00-691-0195	6	21
5915-00-113-2640	13	39	5935-00-717-1335	10	20
5930-00-113-7582	13	42	5935-00-717-1335	11	27
5910-00-114-0700	9	2	5935-00-717-1351	7	42
5905-00-119-3505	6	25	5935-00-717-1351	8	51
5910-00-126-1768	7	11	5935-00-717-1351	9	38
5999-00-126-1864	11	45	5935-00-717-1351	10	16
5999-00-126-1865	11	37	5933-00-717-1351	11	23
5999-00-131-1325	2	3	5905-00-717-5884	11	17
			5310-00-721-3674	11	43
			5310-00-722-5998	2	7
			5905-00-723-5251	6	26
			5905-06-723-5251	7	19
			5905-00-723-5251	8	26
			5905-00-723-5251	9	18
9935-W-199-2657	16	3	5340-00-725-4423	2	1
5935-00-223-0572	18	4	5905-00-726-4413	7	23
5930-00-225-7111	13	46	5905-00-726-4413	8	27
6625-00-274-0115	13	30	5905-00-726-4413	9	21
5905-00-279-1890	6	29	5905-00-7264413	10	11
5920-00-280-5031	1	6	5950-00-726-8391	8	17
5920-00-280-5031	3	27	5905-00-727-8001	7	34
5920-00-281-0224	1	4	5905-00-727-8001	8	37
5920-00-281-0224	13	9	5905-00-727-8001	9	26
5920-00-284-9492	1	7	4920-00-730-3481	2	24
5920-00-284-9492	3	25	4920-00-730-3481	4	10
5365-00-407-3541	5	29	5961-00-752-6121	11	30
5910-00-456-0810	8	12	5905-00-755-8389	9	32
5910-00-456-0810	9	5	5905-00-761-5409	8	30
5910-00-460-0868	6	6	5904-00-765-5454	8	29
5910-00-460-0868	7	5	5310-00-771-7396	5	15
5910-00-460-0868	8	4	5310-00-779-6737	4	3
5910-00-460-0868	9	4	5935-00-781-8765	15	3
5920-00-538-2825	1	5	5935-00-781-8765	17	3
5920-00-538-2825	3	26	5910-00-787-2109	11	1
5905-00-639-2573	13	2	5310-00-792-1704	13	38
5310-00-550-5009	11	35	5905-00-800-8063	6	22
5355-00-556-0151	13	5	5905-00-801-2377	9	25
5905-00-577-7129	13	1			

## SECTION IV

## NATIONAL STOCK NUMBER AND PART NUMBER INDEX

TM 11-6625-1644-24P

STOCK NUMBER	FIGURE NO.	ITEM NO.	STOCK NUMBER	FIGURE NO.	ITEM NO.
5905-00-801-6444	9	27	5962-00-878-8854	10	8
S330-00-806-8769	13	6	5310-00-880-5976	2	18
5935-00-808-6134	6	37	5905-00-889-0201	8	47
5935-00-808-6134	7	41	5905-00-889-0201	9	34
5935-00-808-6134	8	50	6625-00-889-7037	1	12
5935-00-808-6134	9	37	5970-00-892-3782	3	18
5935-00-808-6134	10	15	5910-00-893-6745	6	10
5935-00-808-6334	11	22	5935-00-898-7228	10	18
5940-00-808-7224	14	4	5933-00-898-7228	11	25
5940-00-808-7224	20	3	5935-00-899-9361	13	15
5935-00-809-0786	16	4	5310-00-905-5454	4	5
5940-00-812-1668	14	3	5961-00-911-6015	7	16
5940-00-812-1668	20	2	5961-00-911-6015	8	20
5935-00-812-6415	7	43	5961-00-911-6015	11	7
5935-00-812-6415	9	39	5905-00-912-7789	8	32
5935-00-812-6415	10	17	5950-00-926-3145	6	13
5935-00-812-6415	11	24	5950-00-924-3145	7	14
5340-00-814-6698	13	28	5950-00-926-3145	8	16
5365-00-820-4535	15	2	5950-00-924-3145	9	13
5345-00-820-4535	16	6	5950-00-924-3145	10	5
5345-00-820-4535	17	2	6150-00-926-6368	1	3
5365-00-820-4535	18	6	5999-00-929-3950	6	40
5935-00-823-0487	21	2	5310-00-929-6395	2	19
5935-00-825-8864	13	24	5310-00-929-6395	5	31
5935-00-627-4019	20	4	5935-00-933-4015	3	17
5910-00-830-4884	7	6	5310-00-933-8118	3	15
4210-00-840-1057	13	14	5310-00-933-8118	4	9
5935-00-843-7342	17	8	5310-00-934-9748	2	20
5310-00-843-7635	5	4	5310-00-934-9748	13	43
5935-00-847-2600	14	5	5310-00-934-9761	5	18
5935-00-850-6522	13	16	5935-00-934-7376	20	6
5905-00-851-7151	7	37	5935-00-934-7377	16	5
5905-00-851-7151	8	45	5935-00-936-7377	18	5
5905-00-851-7151	9	24	5310-00-938-2013	11	44
5905-00-851-7051	11	16	5935-00-964-3905	6	38
5905-00-851-7165	7	30	5935-00-964-3905	7	44
5905-00-851-7165	8	31		8	49
5905-00-851-7165	9	22		9	40
5905-00-851-7165	11	18	5935-00-964-3905	10	21
5905-00-851-7165	11	46	5935-00-944-3905	11	28
5961-00-852-2269	6	35	5310-00-965-9625	2	10
5935-00-854-7465	7	39	5325-00-966-6608	2	5
5935-00-854-7465	8	48	5330-00-966-8883	1	13
5935-00-854-7465	9	35	5330-00-966-8883	4	7
5935-00-854-7465	10	13	5905-00-982-7947	7	26
5935-00-854-7465	11	20	5340-00-990-6408	12	5
5935-00-854-7465	10	6	5340-00-992-8139	2	21
5962-00-878-8567	10	7	5355-00-994-3435	13	4
5962-00-878-8853	10	7			

PART NUMBER	FSCM	FIG. NO.	ITEM NO.	PART NUMBER	FSCM	FIG. NO.	ITEM NO.
A10104	07047	11	39	CM05FD331J03	81349	8	10
CG3504U	80058	1	8	CM05FD331J03	81349	9	6
CG409HU	80058	1	10	CM05FD361J03	81349	6	11
CK05CW102K	81349	6	10	CM05FD361J03	81349	7	2
CK05CW561K	81349	11	2	CM05FD361J03	81349	9	9
CK06CW103K	81349	6	1	CM05FD391J03	81349	7	8
CK06CW103K	81349	7	12	CM05FD391J03	81349	9	1
CK06CW103K	81349	8	13	CM05FD910J03	81349	8	12
CK06CW103K	81349	9	10	CM05FD910J03	81349	9	5
CK06CW103K	81349	10	2	CH101GAPM270V	80058	1	12
CL25BH301UPS-3	81349	12	2	CX11626APM123V	80058	1	3
CL25BL700TP3	81349	12	1	CX11628APM123	80058	1	3
CM05ED100J03	81349	6	5	CX11629APM123	80058	1	3
CM05ED270J03	81349	6	8	CX11719APM	80058	1	3
CM05ED270J03	81349	7	9	CX11722APM270V	80058	1	9
CM05ED270J03	81349	8	3	CV12C750J	81349	8	8
CM05ED270J03	81349	9	11	CV12C820J	81349	8	9
CM05ED270J03	81349	10	3	D41	81349	16	2
CM05ED470J03	81349	7	4	D41	81349	18	2
CM05ED470J03	81349	8	2	D7500-884	17419	13	23
CM05ED470J03	81349	9	3	FHL17G1	81349	13	10
CM05ED420J03	81349	8	11	FHN26G	81349	5	2
CM05FD101J03	81349	6	6	F02A250V1-16AS	81349	1	7
CM05FD101J03	81349	7	5	F02A250V1-16AS	81349	3	25
CM05FD101J03	81349	8	4	F02A250V1-2AS	81349	1	4
CM05FD101J03	81349	9	4	F02A250V1-2AS	81349	13	9
CM05FD151J03	81349	6	4	F02A250V1-4AS	81349	1	6

PART NUMBER	FSCM	FIG. NO.	ITEM NO.	PART NUMBER	FSCM	FIG. NO.	ITEM NO.
PO2A250V1-4AS	81349	3	27	MS1997-27	96906	2	8
PO2A250V3-8AS	81349	1	5	MS1997-28	96906	5	21
PO2A250V3-8AS	81349	3	26	MS1997-29	96906	5	23
P22NKT40	72962	13	3	MS1997-5	96906	11	41
Q1919A1810B2P	06324	20	5	MS91528-1D2B	96906	13	5
LB5A1B	98978	11	45	MS91528-1E2B	96906	13	4
LC198N1	81349	13	12	MS91528-1F2B	96906	13	13
LC5A1B	98978	11	37	MLC930-1D	14433	10	7
LH77-1	81349	13	14	MLC945-1D	14433	10	6
MP6001-06	15653	5	8	MLC946-1D	14433	10	8
MP7201-04	15653	13	38	ML9978-1-1285	81349	6	9
MRPH6-32SX	83324	5	4	ML9978-1-1305J	81349	7	7
MS15795-702	96906	21	43	M26655-2-0004	81349	8	14
MS15795-704	96906	11	35	M26655-2-0098	81349	10	1
MS15795-803	96906	3	16	M26655-2-0098	81349	6	7
MS15795-803	96906	4	8	M26655-2-0098	81349	8	1
MS15795-805	96906	2	7	M26655-2-0098	81349	9	7
MS15795-806	96906	2	18	M26655-2-0098	81349	7	1
MS17160-24	96906	5	27	M26655-2-0122	81349	8	6
MS18020-1	96906	2	25	M26655-2-0144	81349	7	1
MS18020-1	96906	4	11	M26655-2-0174	81349	11	10
MS18100-27	96906	6	13	M26655-2-0174	81349	6	2
MS18100-27	96906	7	14	M26655-2-0174	81349	9	8
MS18100-27	96906	8	16	M26655-2-0186	81349	6	3
MS18100-27	96906	9	13	NAS1515HD4L	80205	13	3
MS18100-27	96906	10	5	NAS1515MD2L	80205	11	42
MS18121-128	96906	14	4	NAS1598CO4Y	80205	1	13
MS18121-128	96906	20	3	NAS1598CO4Y	80205	4	7
MS2106LO8	96906	4	3	NAS1598C3Y	80205	13	26
MS21062LO6	96906	5	11	NAS520C6	80205	3	4
MS21076LO6	96906	5	15	NAS620C4	80205	13	44
MS21981-063	96906	14	3	NE51	81349	13	11
MS21981-063	96906	20	2	NMC629	73896	8	7
MS24655-231	96906	13	46	RC07GF101J	81349	7	18
MS24693C24	96906	2	9	RC07GF101J	81349	8	35
MS24693C27	96906	5	17	RC07GF101J	81349	9	17
MS24693C73	96906	13	8	RC07GF102J	81349	8	38
MS25082-8	96906	4	4	RC07GF103J	81349	7	36
MS25196-1	96906	13	6	RC07GF112J	81349	6	22
MS28136-5	96906	12	5	RC07GF121J	81349	6	27
MS3057-10A	96906	12	4	RC07GF121J	81349	9	31
MS3057-12A	96906	18	4	RC07GF122J	81349	6	33
MS207A20-4P	96906	18	3	RC07GF122J	81349	7	20
MS3106A18-9P	96906	16	3	RC07GF122J	81349	8	22
MS3112E14-5P	96906	13	16	RC07GF122J	81349	9	19
MS3112E18-32S	96906	13	24	RC07GF123J	81349	7	23
MS3116E18-32P	96906	20	4	RC07GF123J	81349	8	27
MS3116F14-5S	96906	15	3	RC07GF123J	81349	9	21
MS3116F14-5S	96906	17	3	RC07GF123J	81349	10	11
MS3181-14C	96906	13	15	RC07GF152J	81349	6	19
MS3181-18C	96906	13	20	RC07GF153J	81349	7	31
MS3420-10	96906	20	6	RC07GF153J	81349	8	34
MS3420-6	96906	15	2	RC07GF153J	81349	11	15
MS3420-6	96906	16	6	RC07GF182J	81349	8	33
MS3420-6	96906	17	2	RC07GF184J	81349	6	34
MS3420-6	96906	18	6	RC07GF2R7G	81349	7	38
MS3420-8	96906	16	5	RC07GF2R7J	81349	8	47
MS3420-8	96906	16	5	RC07GF2R7J	81349	9	34
MS34059-22	96906	18	7	RC07GF202J	81349	8	39
MS35168-88E	96906	13	2	RC07GF211J	81349	9	33
MS35170-260E	96906	19	2	RC07GF220J	81349	9	32
MS35177-492D	96906	13	45	RC07GF221J	81349	6	20
MS35186-123A	96906	13	18	RC07GF221J	81349	7	35
MS35333-121	96906	4	5	RC07GF221J	81349	11	19
MS35338-134	96906	11	36	RC07GF222J	81349	6	26
MS35338-135	96906	3	13	RC07GF222J	81349	6	19
MS35338-135	96906	4	9	RC07GF222J	81349	7	26
MS35338-136	96906	4	19	RC07GF222J	81349	8	18
MS35338-136	96906	5	31	RC07GF223J	81349	9	29
MS35368-306B	96906	5	5	RC07GF224J	81349	7	21
MS35431-3	96906	14	19	RC07GF224J	81349	8	28
MS35649-224	96906	5	44	RC07GF224J	81349	9	20
MS35649-244	96906	11	20	RC07GF272J	81349	8	43
MS35649-244	96906	2	43	RC07GF273J	81349	6	17
MS35649-264	96906	13	18	RC07GF273J	81349	7	27
MS51997-12	96906	5	22	RC07GF273J	81349	9	28
MS51997-14	96906	13	20	RC07GF273J	81349	8	25
MS51997-14	96906	5	25	RC07GF292J	81349	8	44
MS51997-15	96906	2	17	RC07GF331J	81349	10	10
MS51997-15	96906	3	14	RC07GF332J	81349	11	9

## SECTION IV

## NATIONAL STOCK NUMBER AND PART NUMBER INDEX

TM11-6625-1644-24P

PART NUMBER	FSCN	FIG. NO.	ITEM NO.	PART NUMBER	FSCN	FIG. NO.	ITEM NO.
RC07GF391J	81349			SMC656600	80063	5	9
RC07GF471J	81349	6	23	SMC656604	80063	5	3
RC07GF472J	81349	6	32	SMC656605	80063	5	2
RC07GF473J	81349	6	30	SMC656628	80063	5	10
RC07GF473J	81349	7	30	SMC656637	80063	5	26
RC07GF473J	81349	8	24	SMC656643	80063	4	2
RC07GF561J	81349	6	1 8	SMC656674	80063	2	13
RC07GF561J	81349	8		SMC656689	80063	2	2
RC07GF561J	81349	11	14	SMC656693	80063	19	21
RC07GF562J	81349	11	14	SMC656696	80063	5	5
RC07GF681J	81349	8	34	SMC656697	80063	3	19
RC07GF681J	81349	8		SMC656699	80063	13	30
RC07GF681J	81349	9	26	SMC656700	80063	1	14
RC07GF682J	81349	6	3 1	SMC656701	80063	1	14
RC07GF682J	81349	8		SMC656704-1	80063	2 0	7
RC07GF682J	81349	6	2 5	SMC656704-2	80063	2 0	1
RC07GF750J	81349	4	25	SMC656709	80063	2	1 6
RC07GF821J	81349	6	2 4	SMC656731	80063	5	2 2
RC07GF821J	81349	8	2 4	SMD656556	80063	3	2 0
RC07GF822J	81349	7	2 1	SMD656559	80063	3	2 1
RC07GF910J	81349	2	33	SMD656562	80063	3	2 2
RC07GF910J	81349	8	3 6	SMD656565	80063	3	2 3
RC07GF911J	81349	9	2 7	SMD656568	80063	3	2 4
RC20GF152J	81349	11	8	SMD656571	80063	3	2 8
RC20GF391J	81349	12	2 9	SMD656573	80063	1	11
RC32GF3R3J	80131	1 2	4	SMD656589	80063	4	6
RC60E2001F	81349	7	2 8	SMD656592	80063	5	1 6
				SMD656596	80063	3	2 9
				SMD656602	80063	5	6
				SMD656606	80063	5	1 4
RN60E1872F	81349	9	30	SMD656607	80063	3	e
RN60E2101F	81349			SMD656635	80063	13	4 1
RN60E2101F	81349	11	11	SMD656638	80063	3	10
RN60E2611F	81349	7	26	SMD656640	80063	1	2
RN60E3011F	81349	11	13	SMD656641	80063	3	1
RN60E3161F	81349	7	37	SMD656644	80063	4	1
RN60E3161F	81349	8	45	SMD656644	80063	2	1 4
RN60E3161F	81349	11	24	SMD656653	80063	2	6
RN60E3161F	81349	11	16	SMD656655	80063	5	1
RN60E5111F	81349	7	30	SMD656695	80063	5	2 5
RN60E5111F	81349	9	2 2	SMD656698	80063	3	9
RN60E5111F	81349	11	1 8	SMD656714	80063	3	1 3
RN60E7500F	81349	11	10	SMD656715-1	80063	3	4 0
RN60E7501F	81349	7	2 9	S203	18677	6	1
RN60E8250F	81349	7	2 2	TS2735APM270V	80058	1	1
RN60E9091F	81349	11	2 9	TS903-500	18977	2	1 1
RT12C2P102	81349	1 1	1 7	T101-125	18677	5	7
RT12C2P103	81349	6	2 9	T101-250	18677	5	2 8
RT12C2P202	81349	8	30	T101-500	18677	5	2 9
RT12C2P501	81349	8	41	T31248U	18677	2	1 2
RT12C2P501	81349	11	1 2	T903-3-720	18677	5	1 2
RT12C2P502	81349	7	2 4	UG657U	81349	13	31
RT12C2P502	81349	8	4 6	UPC48	98978	11	4 6
RT12C2P502	81349	9	2 3	UP1T088	98978	11	3 8
RV4SAYS0252A	81349	13	2	UP131M	81349	17	4
RV4SAYS0252A	81349	13	2	UP221M	81349	15	5
R4-40-1-2	97539	13	4 7	XAA80	00929	14	7
R4-40-3-8	97539	13	1 9	ZP5035-43	98376	2	1 5
R6-32-7-16	97539	5	3 0	ZSP2-204-1	98376	2	2 1
SMC568592-2	80063	19	1	ZSP4-403-1	98376	2	1
SMC568596-1	80063	14	2	ZSP6-602	98376	2	2 4
SMC568596-2	80063	21	1	ZSP6-602	98376	4	1 0
SMC568596-3	80063	15	1	Z32-488	98376	13	3 5
SMC568596-3	80063	16	1	Z32-48COT	98376	13	4 0
SMC568596-3	80063	1 7	1	05PL2Q2JS	12517	7	1 1
SMC568596-3	80063	18	1	05PL273JS	12517	7	3
SMC568660-3	80063	3	1 2	05PL333JS	12517	7	6
SMC568673	80063	3	1 1	05PL392JS	12517	8	5
SMC656576-3	80063	6	3 9	05P1103JS	12517		
SMC656576-4	80063	7	4 5	091-0024-000	05574	3	1 8
SMC656576-5	80063	8	5 2	IN21WE	81349	14	6
SMC656576-6	80063	9	4 1	IN30248	81349	11	3 1
SMC656576-7	80063	10	2 2	IN30318	80131	11	2 9
SMC656576-8	80063	11	3 4	IN3189	81349	1 2	3
SMC656576-9	80063	12	6	IN3828A	81349	11	3 2
SMC656583	80058	2	2 3				
SMC656587	80063	2	4	IN753A	81349	11	3 0
SMC656591	80063	5	2 4	IN914	80131	6	1 2
SMC656593	80063	3	7	IN914	80131	7	1 3
SMC656597	80063	13	2 9	IN914	80131	8	1 5
SMC656598	80063	1	1 4	IN914	80131	9	1 2

PART NUMBER	FSCN	FIG. NO.	ITEM NO.	PART NUMBER	FSCN	FIG. NO.	ITEM NO.
1N914	80131	10	4	3-582118-1	00779	1	0
1N914	80131	11	3	3-582118-1	00779	11	20
10-450-14S	77820	13	17	3-582118-2	00779	6	36
10-450-18S	77820	13	27	3-582118-2	00779	9	7
10269	07047	6	41	3-582118-2	00779	9	7
1062-30	88245	13	28	3-582118-2	00779	10	14
15R1-1AE	71286	2	22	3-582118-2	00779	11	21
15S1-3-1AF	71286	2	5	3-582118-3	00779	6	37
15S11-1AD	71286	2	10	3-582118-3	00779	7	41
1909M1-8NP	91812	13	42	3-582118-3	00779	8	50
26M22-1AN5	05574	3	17	3-582118-3	00779		37
2JX51A16	86289	13	39	3-582118-3	00779	10	15
2N1485	80131	1	1	3-582118-3	00779	11	22
2N2219A	80131	11	15	3-582118-4	00779	7	42
2N2222A	81349	9	14	3-582118-4	00779	8	51
2N2222A	81349	9	14	3-582118-4	00779	9	38
2N2222A	81349	7	15	3-582118-4	00779		16
2N2222A	81349	8	19	3-582118-4	00779	11	23
2N2222A	81349	10	9	3-582118-5	00779	7	43
2N2222A	81349	11	5	3-582118-5	00779	9	39
2N2481	81349	7	16	3-582118-5	00779	10	17
2N2481	81349	7	17	3-582118-5	00779		24
2N2481	81349	8	18	3-582118-6	00779	10	18
2N2481	81349	9	15	3-582118-6	00779	11	25
2N2905	80131	11	6	3-582118-7	00779		19
2N3251A	81349	7	16	3-582118-7	00779	11	26
2N3251A	81349	8	20	3-582118-8	00779	10	20
2N3251A	81349	11	7	3-582118-8	00779		27
2N3251A	80131	11	16	333	79963	13	36
213	05820	11	40	35216	09769	1	5
22LHA27M22-40	72962	13	37	4004	76381	3	5
3-582118-0	00779	6	38	549-5GGS	76381	3	6
3-582118-0	00779	7	44	568207	71400		3
3-582118-0	00779	8	49	58-007-000	98291	14	1
3-582118-0	00779	9	40	60-501-44	05254	5	13
3-582118-0	00779	10	21	62335S0632-7	06540		3
3-582118-0	00779	11	28	639	79943	1	3
3-582118-1	00779	6	35	668-3-95F	00502	2	26
3-582118-1	00779	7	39	901-30	88245	13	32
3-582118-1	00779	8	48	9210-84	76493	8	17
3-582118-1	00779	9	35				

LATEST NATIONAL STOCK NUMBER ASSIGNMENTS

STOCK NUMBER	NO.	NO.	STOCK NUMBER	NO.	NO.
5910-00-007-2003	6	7			
5910-00-007-2003	9	7	5310-00-773-7624	3	4
5910-00-007-2003	10	1	5310-00-778-9166	5	11
5910-00-010-8718	6	1			
5910-00-010-8718	7	12	5305-00780-8455	13	8
5910-00-010-8718	8	13			
5910-00-010-8718	9	10			
5910-00-010-8718	10	2	5910-00-836-4535	6	8
5910-00-022-5655	9	9	5910-00-836-4535	10	3
5910-00-044-4355	7	4	5961-00-842-9864	6	12
5910-00-044-4355	8	2	5961-00-842-9864	7	13
5910-00-044-4355	9	3	5961-00-842-9864	8	15
			5961-00-842-9864	9	12
			5961-00-842-9864	10	4
			5961-00-842-9864	11	3
5340-00-060-9029	5	27			
5325-00-065-5952	2	22			
5961-00-068-0687	11	32			
5935-00-085-7530	14	1	5935-W-850-9157	19	2
5905-00-104-8358	8	21	5305-W-864-5732	3	3
5905-W-111-4727	8	43		12	3
6625-00-118-1953	2	12	5935-W-885-2264	13	8
6625-W-118-1954	2	11	5961-00-892-0919	11	29
5905-W-120-9154	10	12	5935-W-892-9035	13	31
5910-00-144-4381	6	2	5920-W-892-9311	5	2
5910-00-144-4381	7	10	5935-W-899-6869	18	8
5910-00-160-5469	6	3	5%1-W-911-6015	9	16
5940-00-204-8966	15	4	5310-W-913-8880	11	42
			5961-W-926-0135	6	16
			5961-W-926-0135	7	17
5905-00-452-1262	7	28	5%1-W-926-0135	8	18
5905-00-455-4403	7	38	6150-w-926-6369	1	3
5305-W-494-7334	5	21	5310-W-928-2690	11	36
5961-00-615-5550	14	6	5910-W-929-2385	7	7
			5935-w-931-7490	15	5
			5995-00-933-5782	1	10
			5995-W-935-8758	1	9
			5310-w-939-1074	13	33
			5961-00-949-1432	6	15
			5961-W-951-8757	9	14
			5910-W-952-1549	7	8
			5910-W-952-1549	9	1
			5305-w-969-4356	5	30
			5340-00-976-4123	13	32
			5999-00-982-7921	11	38



LATEST ADDITIONAL NATIONAL STOCK NUMBER AND PART NUMBER ASSIGNMENTS

STOCK NUMBER	FIGURE NO.	ITEM NO.
5910-00-067-5697	6	8
5961-00-081-4816	11	4
5905-00-105-7768	6	18
5905-00-105-7768	8	40
5905-00-105-7768	11	14
590-00-106-3666	7	36
5905-00-111-4738	11	8
5905-00-119-3504	6	17
5905-00-119-3504	7	27
5905-00-119-3504	8	25
5905-00-119-3504	9	28
5905-00-141-1183	7	18
5905-00-141-1183	8	35
5905-00-141-1183	9	17
5910-00-175-4635	12	2
5910-00-236-8745	8	6
5961-00-847-5241	11	29
5910-00-902-0335	6	5
5961-00-957-6865	12	3

LATEST ADDITIONAL NATIONAL STOCK NUMBER AND PART NUMBER ASSIGNMENTS

STOCK NUMBER	FIGURE NO.	ITEM NO.
5330-00-947-4271	13	26
5905-00-432-5848	7	25
5910-00-007-2003	7	1
5910-00-007-2003	8	1
5910-00-022-5655	6	11
5910-00-022-5655	7	2
5910-00-126-6914	6	9
5910-00-144-4381	9	8
5910-00-169-3951	8	11
5910-00-702-8057	8	10
5910-00-702-8057	9	6
5910-00-836-4535	7	9
5910-00-836-4535	8	3
5910-00-836-4535	9	11
5910-00-898-9616	8	9
5935-00-823-0308	13	45
5961-00-847-5508	11	31
5961-00-926-0135	9	15
5961-00-930-2765	11	33
5961-00-949-1440	11	6
5961-00-951-8757	6	14
5961-00-951-8757	7	15
5961-00-951-8757	8	19
5961-00-951-8757	10	9
5961-00-951-8757	11	5
5999-00-944-3625	11	40

PART NUMBER	FIG. NO.	ITEM NO.
ENGOR5111F	8	31
RN60R6191F	8 1 3 4 9	32
1 N 7 4 8 A	01295	33

RECOMMENDED CHANGES TO EQUIPMENT TECHNICAL MANUALS



# SOMETHING WRONG WITH THIS MANUAL?

THEN... JOT DOWN THE DOPE ABOUT IT ON THIS FORM, TEAR IT OUT, FOLD IT AND DROP IT IN THE MAIL!

FROM: (YOUR UNIT'S COMPLETE ADDRESS)

Commander  
Stateside Army Depot  
ATTN: AMSTA-US  
Stateside, N.J. 07703

DATE 10 July 1975

PUBLICATION NUMBER

TM 11-5840-340-12

DATE

23 Jan 74

TITLE

Radar Set AN/SPS-76

BE EXACT... PIN-POINT WHERE IT IS

IN THIS SPACE TELL WHAT IS WRONG AND WHAT SHOULD BE DONE ABOUT IT:

PAGE NO.	PARA-GRAPH	FIGURE NO.	TABLE NO.
2-25	2-28		
3-10	3-3		3-1
5-6	5-8		
		FO3	

Recommend that the installation antenna alignment procedure be changed throughout to specify a 2° IFF antenna lag rather than 1°.

REASON: Experience has shown that with only a 1° lag, the antenna servo system is too sensitive to wind gusting in excess of 20 knots, and has a tendency to rapidly accelerate and decelerate as it hunts, causing strain to the drive train. Hunting is minimized by adjusting the lag to 2° without degradation of operation.

Item 5, Functions column. Change "2 db" to "3db."

REASON: The adjustment procedure for the TRANS POWER FAULT indicator calls for a 3 db (500 watts) adjustment to light the TRANS POWER FAULT indicator.

Add new step f.1 to read, "Replace cover plate removed in step e.1, above."

REASON: To replace the cover plate.

Zone C 3. On J1-2, change "+24 VDC to "+5 VDC."

REASON: This is the output line of the 5 VDC power supply. + 24 VDC is the input voltage.

TYPED NAME, GRADE OR TITLE, AND TELEPHONE NUMBER

SSG I. M. LaSpiritof 999-1776

SIGN HERE:

*SSG I. M. LaSpiritof*

DA FORM 2028-2 (TEST) 1 AUG 74

P.S.--IF YOUR OUTFIT WANTS TO KNOW ABOUT YOUR MANUAL "FIND" MAKE A CARBON COPY OF THIS AND GIVE IT TO YOUR HEADQUARTERS.

HISA 1686-75

TEAR ALONG DOTTED LINE

RECOMMENDED CHANGES TO EQUIPMENT TECHNICAL MANUALS



**SOMETHING WRONG** WITH THIS MANUAL?

THEN... JOT DOWN THE DOPE ABOUT IT ON THIS FORM, TEAR IT OUT, FOLD IT AND DROP IT IN THE MAIL!

FROM: (YOUR UNIT'S COMPLETE ADDRESS)

DATE

PUBLICATION NUMBER

DATE

TITLE

BE EXACT... PIN-POINT WHERE IT IS

IN THIS SPACE TELL WHAT IS WRONG AND WHAT SHOULD BE DONE ABOUT IT:

PAGE NO.	PARA-GRAPH	FIGURE NO.	TABLE NO.
----------	------------	------------	-----------

TEAR ALONG DOTTED LINE

TYPED NAME, GRADE OR TITLE, AND TELEPHONE NUMBER

SIGN HERE:

DA FORM 2028-2 (TEST)  
1 AUG 74

P.S.--IF YOUR OUTFIT WANTS TO KNOW ABOUT YOUR MANUAL "FIND," MAKE A CARBON COPY OF THIS AND GIVE IT TO YOUR HEADQUARTERS.

FILL IN YOUR  
UNIT'S ADDRESS

FOLD BACK

DEPARTMENT OF THE ARMY

OFFICIAL BUSINESS  
PENALTY FOR PRIVATE USE, \$300

POSTAGE AND FEES PAID  
DEPARTMENT OF THE ARMY  
DDO-314



Commander  
US Army Electronics Command  
ATTN: DRSEL-MA-Q  
Fort Monmouth, New Jersey 07703

TEAR ALONG DOTTED LINE

FOLD BACK

REVERSE OF DA FORM 2025-2 (TEST)

RECOMMENDED CHANGES TO EQUIPMENT TECHNICAL MANUALS



**SOMETHING WRONG WITH THIS MANUAL?**

THEN... JOT DOWN THE DOPE ABOUT IT ON THIS FORM, TEAR IT OUT, FOLD IT AND DROP IT IN THE MAIL!

FROM: (YOUR UNIT'S COMPLETE ADDRESS)

DATE

PUBLICATION NUMBER

DATE

TITLE

BE EXACT... PIN-POINT WHERE IT IS

IN THIS SPACE TELL WHAT IS WRONG AND WHAT SHOULD BE DONE ABOUT IT:

PAGE NO.	PARA-GRAPH	FIGURE NO.	TABLE NO.
----------	------------	------------	-----------

TEAR ALONG DOTTED LINE

TYPED NAME, GRADE OR TITLE, AND TELEPHONE NUMBER

SIGN HERE:

DA FORM 2028-2 (TEST)  
1 AUG 74

NOTE:--IF YOUR OUTFIT WANTS TO KNOW ABOUT YOUR MANUAL "FIND," MAKE A CARBON COPY OF THIS AND GIVE IT TO YOUR HEADQUARTERS.

FILL IN YOUR  
UNIT'S ADDRESS

FOLD BACK

DEPARTMENT OF THE ARMY

OFFICIAL BUSINESS  
PENALTY FOR PRIVATE USE, \$300

POSTAGE AND FEES PAID  
DEPARTMENT OF THE ARMY  
DOD-814



Commander  
US Army Electronics Command  
ATTN: DRSEL-MA-Q  
Fort Monmouth, New Jersey 07703

TEAR ALONG DOTTED LINE

FOLD BACK

RECOMMENDED CHANGES TO EQUIPMENT TECHNICAL MANUALS



# SOMETHING WRONG WITH THIS MANUAL?

THEN . . . JOT DOWN THE DOPE ABOUT IT ON THIS FORM, TEAR IT OUT, FOLD IT AND DROP IT IN THE MAIL!

FROM: (YOUR UNIT'S COMPLETE ADDRESS)

DATE

PUBLICATION NUMBER

DATE

TITLE

BE EXACT. . . PIN-POINT WHERE IT IS

IN THIS SPACE TELL WHAT IS WRONG AND WHAT SHOULD BE DONE ABOUT IT:

PAGE NO.	PARA-GRAPH	FIGURE NO.	TABLE NO.

TEAR ALONG DOTTED LINE

TYPED NAME, GRADE OR TITLE, AND TELEPHONE NUMBER

SIGN HERE:

DA FORM 2028-2 (TEST)  
1 AUG 74

P.S.--IF YOUR OUTFIT WANTS TO KNOW ABOUT YOUR MANUAL "FIND," MAKE A CARBON COPY OF THIS AND GIVE IT TO YOUR HEADQUARTERS.

FILL IN YOUR  
UNIT'S ADDRESS

FOLD BACK

DEPARTMENT OF THE ARMY

OFFICIAL BUSINESS  
PENALTY FOR PRIVATE USE, \$300

POSTAGE AND FEES PAID  
DEPARTMENT OF THE ARMY  
DDO-314



Commander  
US Army Electronics Command  
ATTN: DRSEL-MA-Q  
Fort Monmouth, New Jersey 07703

TEAR ALONG DOTTED LINE

FOLD BACK



**By Order of the Secretary of the Army:**

**Official:**

**Paul T. Smith**  
*Major General, United States Army*  
*The Adjutant General*

**FRED C. WEYAND**  
*General, United States Army*  
*Chief of Staff*

**DISTRIBUTION:**

To be distributed in accordance with DA Form 12-36A, Organizational maintenance requirements for AN/APM-270(V).

**DEPARTMENT OF THE ARMY  
US ARMY AG PUBLICATIONS CENTER  
1688 WOODSON ROAD  
ST. LOUIS, MISSOURI 63114**

---

**OFFICIAL BUSINESS  
PENALTY FOR PRIVATE USE, \$300**

**POSTAGE AND FEES PAID  
DEPARTMENT OF THE ARMY  
DOD 314  
FOURTH CLASS**

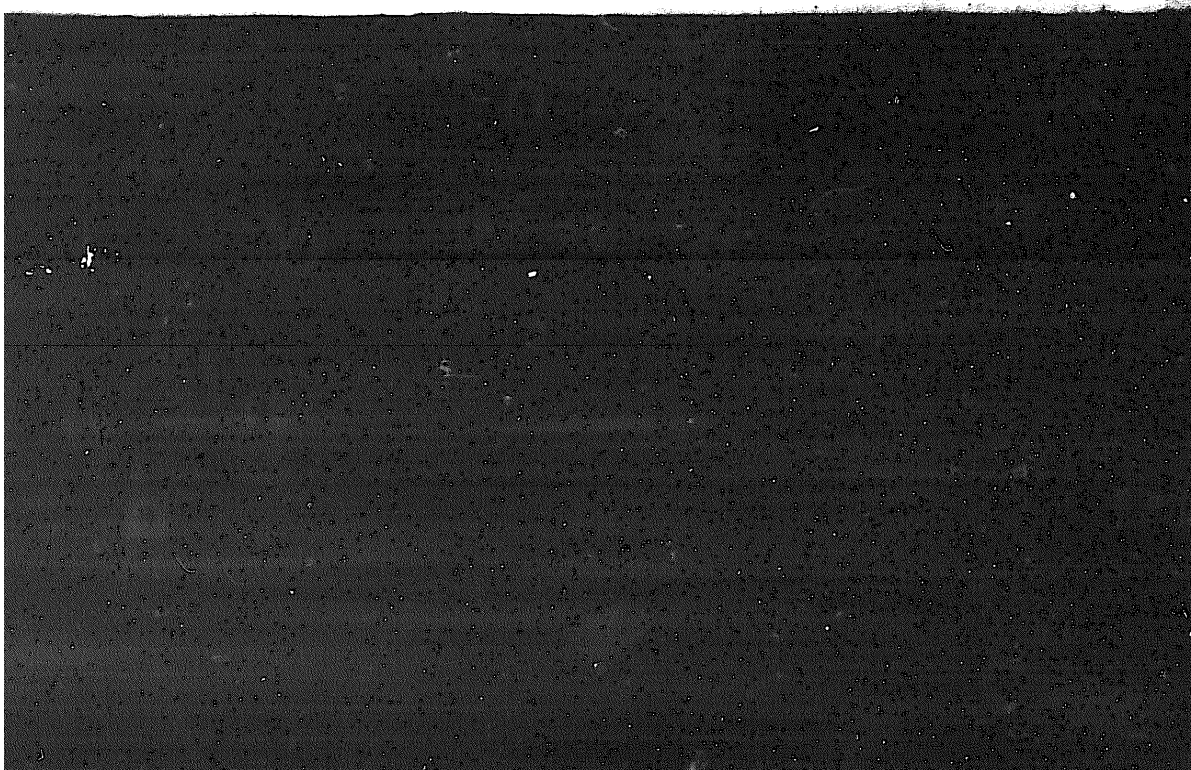


**END**

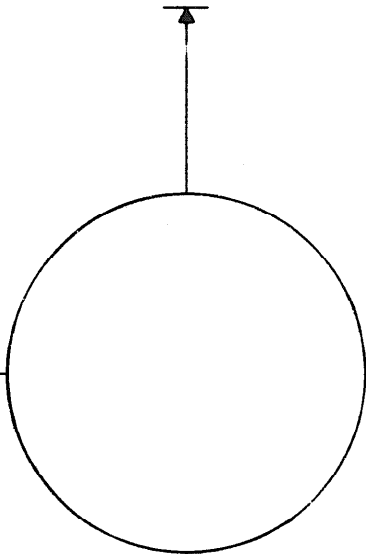
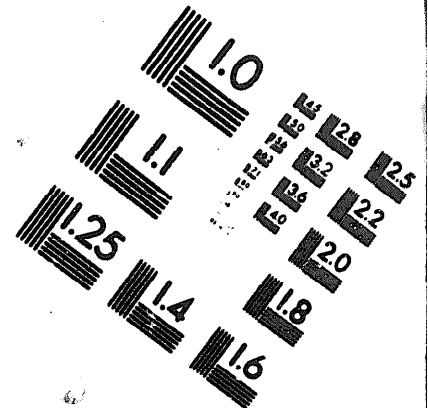
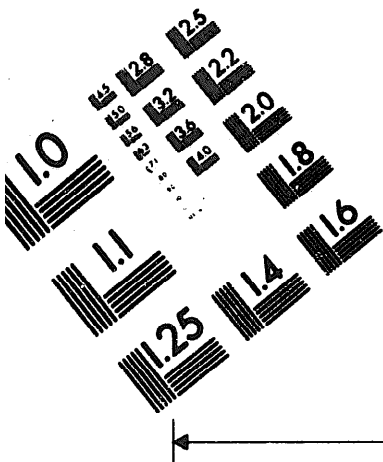
8-1-83

**DATE**





DEPARTMENT OF THE ARMY  
MICROFORM  
TEST TARGET



150 MM

150 MM

1.0 mm (e= .81 mm)  
ABCDEFGHIJKLMNQRSTUWXYZ1234567890  
abcdefghijklmnopqrstuvwxyz\$%&/'%# 1/2 1/4 3/4 —=+ x&@\*

1.0 mm (e= .81 mm)  
ABCDEFGHIJKLMNQRSTUWXYZ1234567890  
abcdefghijklmnopqrstuvwxyz\$%&/'%# 1/2 1/4 3/4 —=+ x&@\*

1.5 mm (e= 1.09 mm)  
ABCDEFGHIJKLMNQRSTUWXYZ1234567890  
abcdefghijklmnopqrstuvwxyz\$%&/'%# 1/2 1/4 3/4 —=+ x&@\*

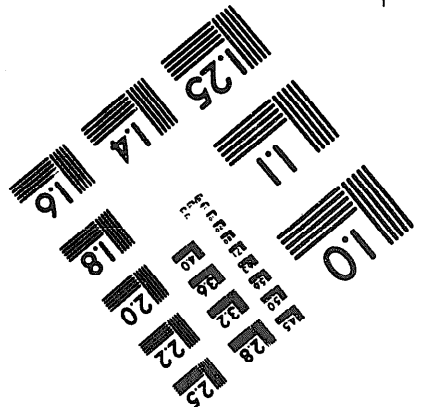
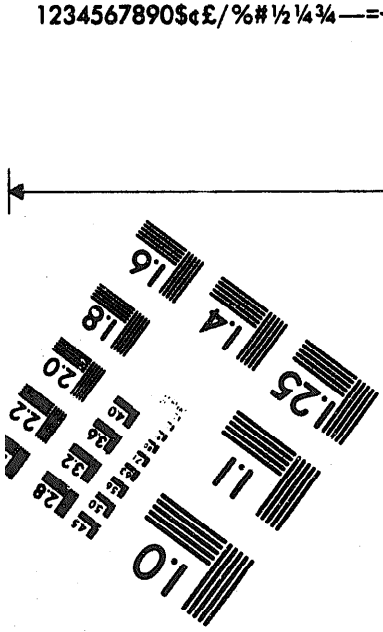
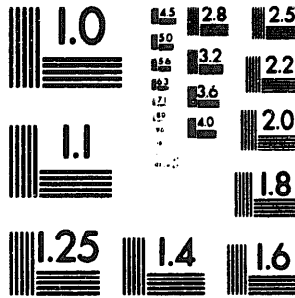
1.5 mm (e= 1.09 mm)  
ABCDEFGHIJKLMNQRSTUWXYZ1234567890  
abcdefghijklmnopqrstuvwxyz\$%&/'%# 1/2 1/4 3/4 —=+ x&@\*

2.0 mm (e= 1.37 mm)  
ABCDEFGHIJKLMNQRSTUWXYZ  
abcdefghijklmnopqrstuvwxyz  
1234567890\$c£/%# 1/2 1/4 3/4 —=+ x&@\*

2.0 mm (e= 1.37 mm)  
ABCDEFGHIJKLMNQRSTUWXYZ  
abcdefghijklmnopqrstuvwxyz  
1234567890\$c£/%# 1/2 1/4 3/4 —=+ x&@\*

2.5 mm (e= 1.77 mm)  
ABCDEFGHIJKLMNQRSTUWXYZ  
abcdefghijklmnopqrstuvwxyz  
1234567890\$c£/%# 1/2 1/4 3/4 —=+ x&@\*

2.5 mm (e= 1.77 mm)  
ABCDEFGHIJKLMNQRSTUWXYZ  
abcdefghijklmnopqrstuvwxyz  
1234567890\$c£/%# 1/2 1/4 3/4 —=+ x&@\*



200 MM

250 MM